

615 | PLEASANT GROVE ROAD

615 PLEASANT GROVE RD | PLEASANT GROVE AL 35127

FOR SALE OR LEASE MEDICAL OFFICE BUILDING

CALL FOR PRICING

- 4,821 / SF Building – 2.91 / AC Land
- Property is well suited for medical, legal or church use
- No city Occupational Tax
- Ample parking
- Building signage available



DEMOGRAPHICS:

POPULATION

1 mile 3,124
3 miles 28,142
5 miles 86,676

DAYTIME BUSINESS POPULATION

1 mile 810
3 miles 11,373
5 miles 27,657

TRAFFIC COUNTS

over 6,000 cars/day at site
over 11,000 cars/day within
1 mile of the site



The information contained herein has been obtained from sources deemed reliable, however, HRS makes no guarantees, warranties or representation as to its completeness or accuracy thereof. The presentation of this property is submitted subject to errors, omissions, change of price or conditions, prior to sale or lease or withdrawal without notice.

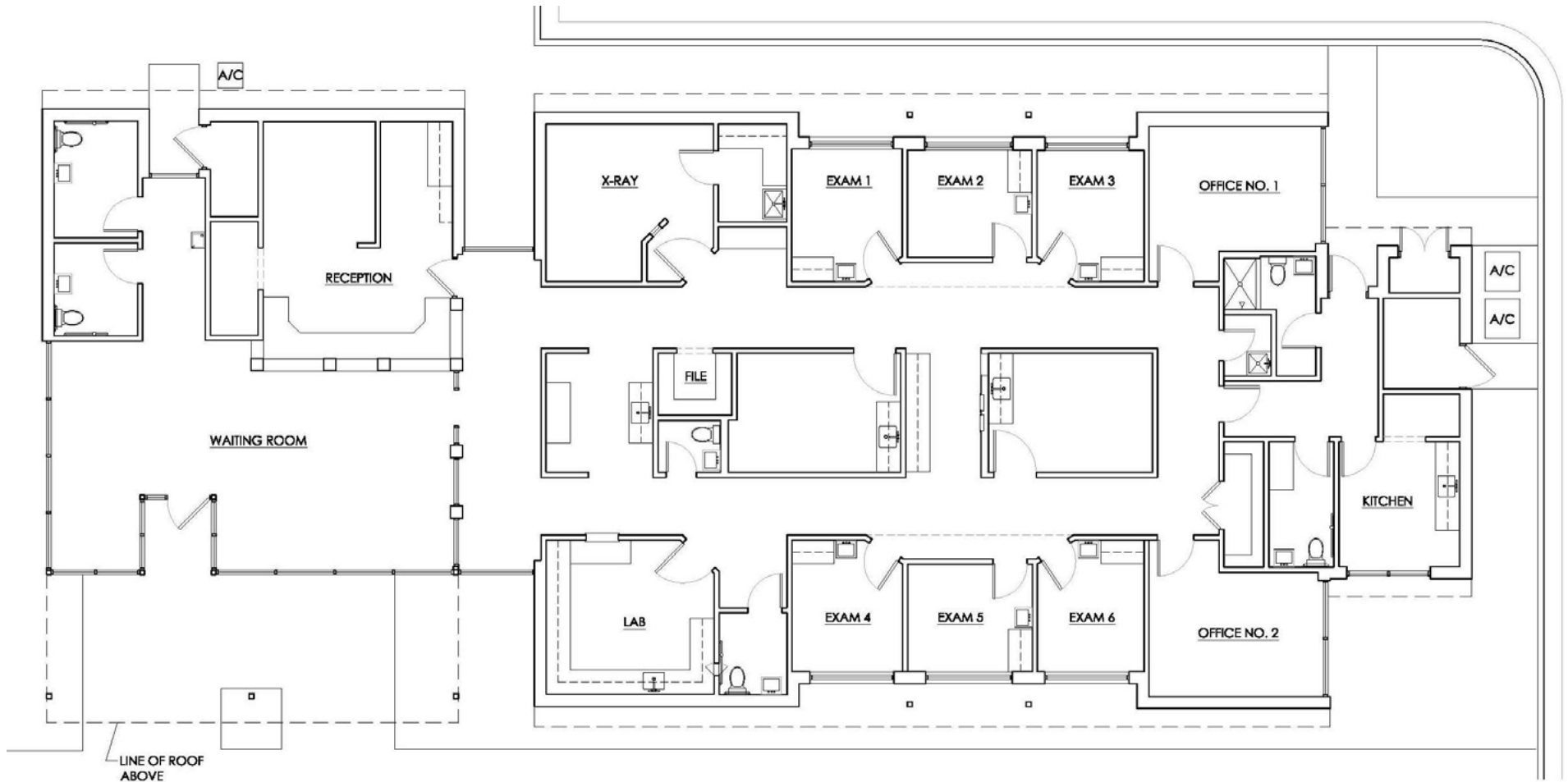
Norman Tynes
ntynes@harbertrealty.com
205.458.8105

2 North Twentieth Street
Suite 1700
Birmingham, AL 35203

HarbertRealty.com
205.323.2020

615 PLEASANT GROVE ROAD

615 PLEASANT GROVE RD | PLEASANT GROVE AL 35127



21