

CONCOURSE AT RIVERCHASE

THE CONCOURSE AT RIVERCHASE, BIRMINGHAM, AL 35244

FOR SALE

\$2,500,000 – \$7.60 / psf

- 7.5/Acres
- Ideal for Medical Use
- North Shelby County
- Easy access to I-65 and Highway 31
- Growing High Traffic Area/Communities
- Riverchase Address

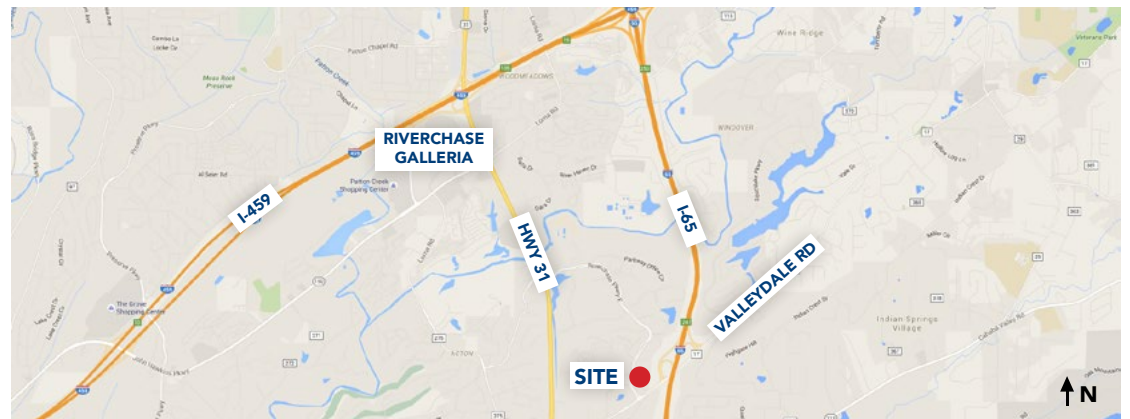
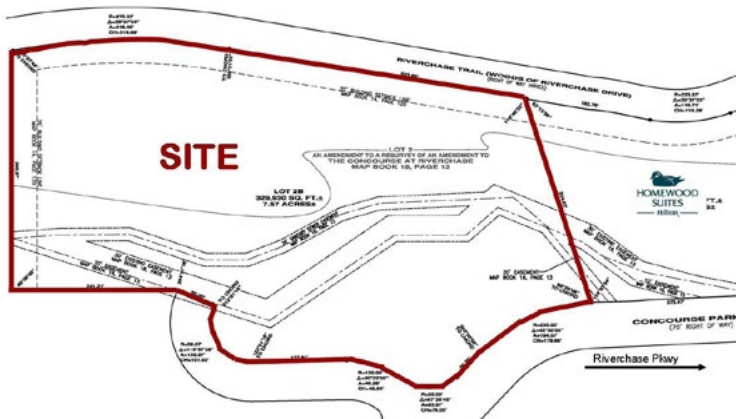
DEMOGRAPHICS:

DAYTIME BUSINESS POPULATION

1 mile	10,226
3 miles	40,298
5 miles	67,421

TRAFFIC COUNT

90,830 cars/day within 1
mile of the site



The information contained herein has been obtained from sources deemed reliable, however, HRS makes no guarantees, warranties or representation as to its completeness or accuracy thereof. The presentation of this property is submitted subject to errors, omissions, change of price or conditions, prior to sale or lease or withdrawal without notice.

Charlie Norton
cnorton@harbertrealty.com
205.458.8116

2 North Twentieth Street
Suite 1700
Birmingham, AL 35203

HarbertRealty.com
205.323.2020