

NEW BUILDINGS AT AUBURN RESEARCH PARK

The Auburn Research Park officially opened with the completion of its first building in September, 2008. Establishment of the park was the result of a partnership between the State of Alabama through the Governor's Office, Auburn University, and the City of Auburn. As an emerging development the Auburn Research Park supports the economic development initiative to grow the knowledge-based economy and create a mixed-use research and business campus.

The vision for the park is to establish an entrepreneurial atmosphere by producing a business and research environment that fosters creativity and innovation, embraces collaboration, partnerships, and promotes a networking structure that leads to economic diversification along with enhanced vitality for the local, state and regional community.

The Auburn Research Park will play a significant role in leveraging Auburn University's intellectual property assets to technology-based economic development by facilitating technology transfer, developing industry partnerships, forming and nurturing new business ventures, and attracting knowledge-based companies to the park.

AUBURN RESEARCH PARK

AUBURN RESEARCH PARK,

located at the south perimeter of Auburn University campus, is a multi-use site that will over time be the location of technology companies, university research facilities, and business firms. The park will also house amenities such as hotel and restaurants to further the tenant/client experience.

With a master plan of up to 12 buildings totalling ~600,000 sf of office/lab space, the park offers a wide range of tenant possibilities. The park is being developed in 2 phases of growth. Phase 1 will include up to 5-6 buildings totalling ~200,000-300,000 sf of space.

The research park contains 171 acres with natural beauty including lakes forests and a wetland preserve. Built as a sustainable development to protect the environment, Auburn Research Park is a perfect balance of nature and advancement.



CAPITAL GROWTH
MEDVEST

HARBERT
REALTY SERVICES

The information contained herein has been obtained from sources deemed reliable, however, HRS makes no guarantees, warranties or representation as to its completeness or accuracy thereof. The presentation of this property is submitted subject to errors, omissions, change of price or conditions, prior to sale or lease or withdrawal without notice.

Charlie Norton
cnorton@harbertrealty.com
205.458.8116

HarbertRealty.com
205.323.2020
2 North Twentieth Street
Suite 1700
Birmingham, AL 35203

AUBURN RESEARCH PARK



BUILDING 570

43,793 square foot multi-tenant facility with private sector and university tenants.



**AUBURN UNIVERSITY
MRI RESEARCH CENTER**



**AUBURN
RESEARCH PARK**



**CAPITAL GROWTH
MEDVEST**

HARBERT®
REALTY SERVICES

The information contained herein has been obtained from sources deemed reliable, however, HRS makes no guarantees, warranties or representation as to its completeness or accuracy thereof. The presentation of this property is submitted subject to errors, omissions, change of price or conditions, prior to sale or lease or withdrawal without notice.

Charlie Norton
cnorton@harbertrealty.com
205.458.8116

HarbertRealty.com
205.323.2020
2 North Twentieth Street
Suite 1700
Birmingham, AL 35203

AUBURN RESEARCH PARK

DEVALL DRIVE, AUBURN AL 36832

OFFICE SPACE

Call for Pricing and More Information on this New Development Opportunity

- +/- 80,000 SF Office Building
- +/- 20,000 SF Floorplates
- Anticipated Delivery 2018

DEMOGRAPHICS:

POPULATION

1 mile 4,751
3 miles 45,418
5 miles 65,369

TRAFFIC COUNTS

over 23,000 cars/day within 1 mile

AVERAGE HOUSEHOLD INCOME

1 mile \$44,472
3 miles \$55,436
5 miles \$60,341

DAYTIME BUSINESS POPULATION

approx 31,000 within 5 miles

FURTHER STATISTICS

- Auburn/Opelika MSA has a population greater than 135,000
- Auburn University has an enrollment of over 25,000 students

All Interested Tenants Welcome. Current tenants include: medical; medical research; medical R&D; cyber security; wireless platforms & technologies; business incubators and university research.



CAPITAL GROWTH
MEDVEST

HARBERT®
REALTY SERVICES

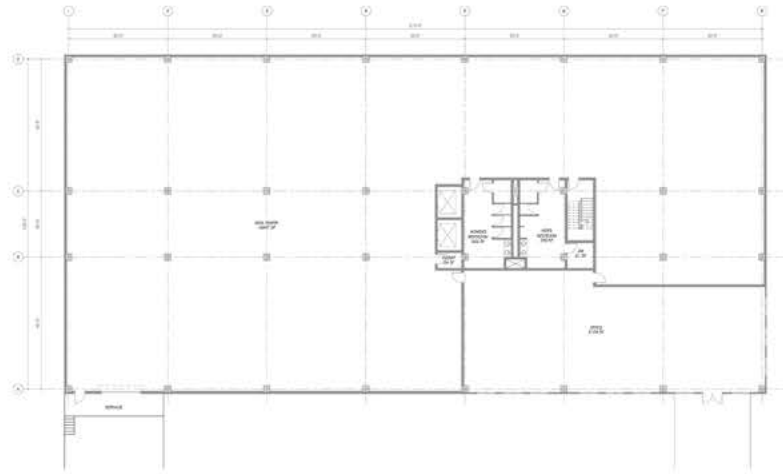
The information contained herein has been obtained from sources deemed reliable, however, HRS makes no guarantees, warranties or representation as to its completeness or accuracy thereof. The presentation of this property is submitted subject to errors, omissions, change of price or conditions, prior to sale or lease or withdrawal without notice.

Charlie Norton
cnorton@harbertrealty.com
205.458.8116

HarbertRealty.com
205.323.2020
2 North Twentieth Street
Suite 1700
Birmingham, AL 35203

AUBURN RESEARCH PARK

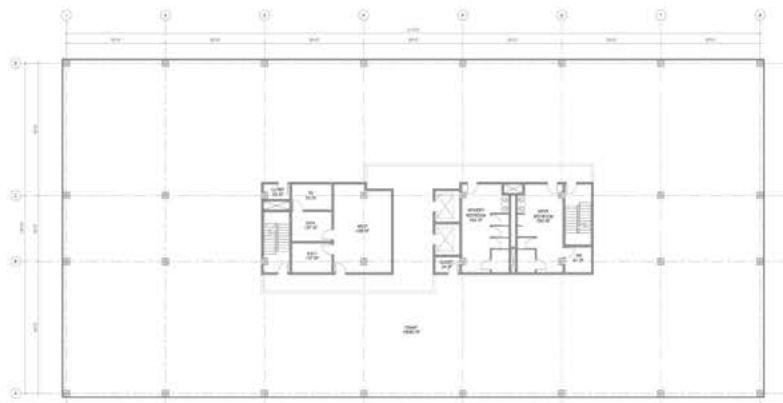
DEVALL DRIVE, AUBURN AL 36832



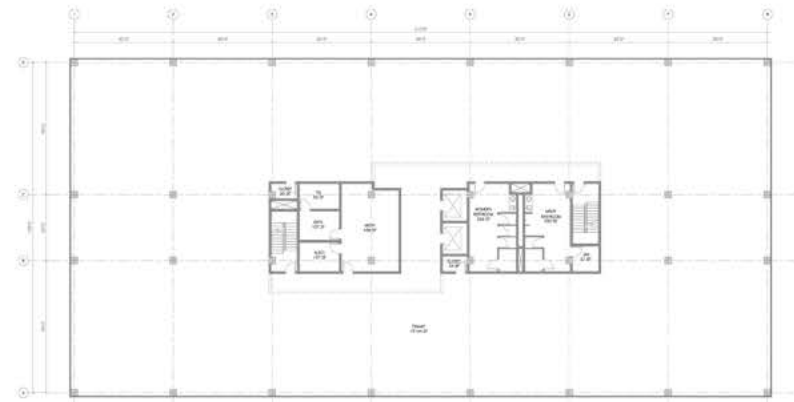
LEVEL 1
BASEMENT



LEVEL 2
MAIN LEVEL



LEVEL 3
TYPICAL LEVEL



LEVEL 4
TYPICAL LEVEL



CAPITAL GROWTH
MEDVEST

HARBERT
REALTY SERVICES

The information contained herein has been obtained from sources deemed reliable, however, HRS makes no guarantees, warranties or representation as to its completeness or accuracy thereof. The presentation of this property is submitted subject to errors, omissions, change of price or conditions, prior to sale or lease or withdrawal without notice.

Charlie Norton
cnorton@harbertrealty.com
205.458.8116

HarbertRealty.com
205.323.2020
2 North Twentieth Street
Suite 1700
Birmingham, AL 35203