



420 20th Street North | Suite 2525 Wells Fargo Tower

BIRMINGHAM, AL

OFFICE SPACE FOR LEASE

HARBERT[®]
REALTY SERVICES

OFFICE SPACE FOR SUB-LEASE

- 5,018 sf Available
- 2 year sub-lease opportunity
- Lease expiration 5-31-19
- Blend and extend is possible
- Nicely appointed space with Dirtt Wall Systems
- Elevator lobby exposure
- Call for pricing

BUILDING AMENITIES:

WELLS FARGO BANK BRANCH
MAKI FRESH
ATTACHED PARKING DECK

AREA INFORMATION:

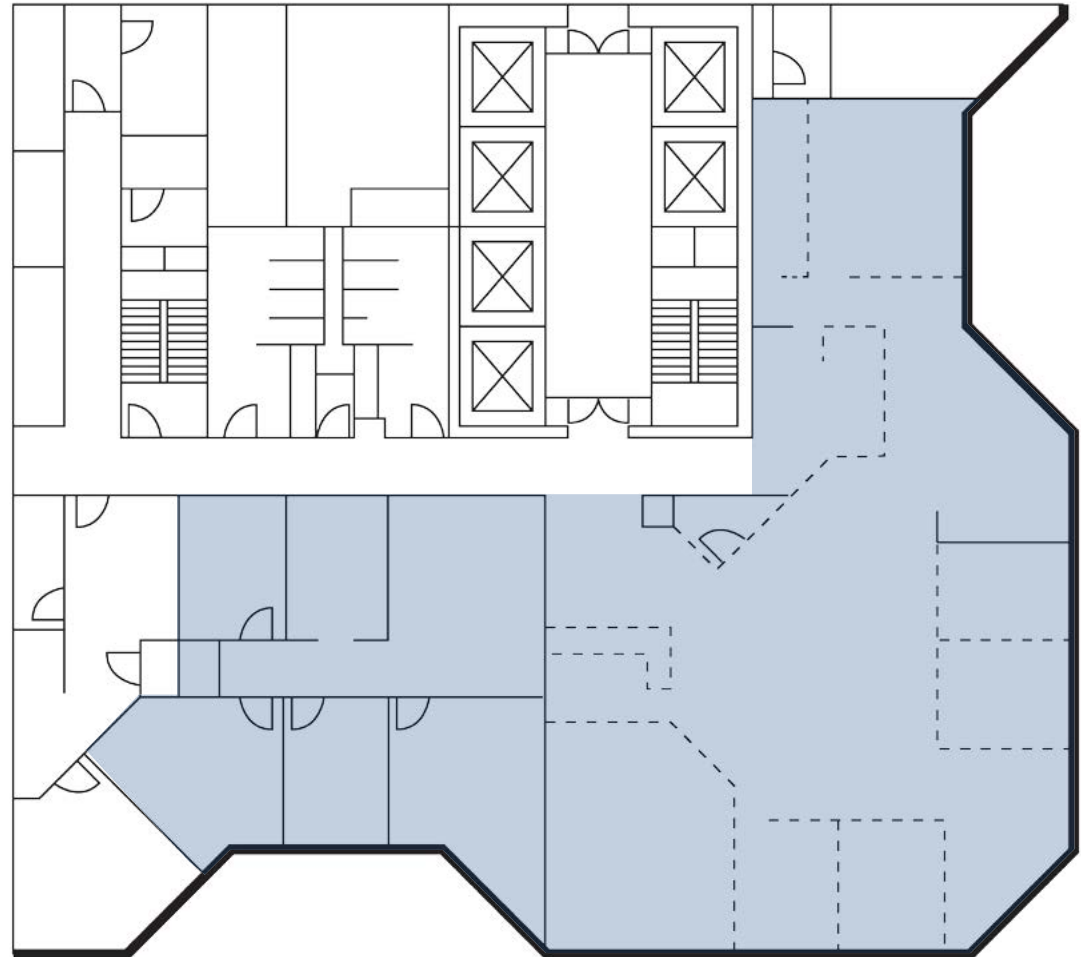
CHICK-FIL-A
ZOE'S
URBAN COOKHOUSE
JIMMY JOHN'S
BRICK AND TIN

DAYTIME BUSINESS POPULATION

1 mile 66,471
3 miles 130,037
5 miles 195,502

AREA PARKING:

BPA DECK 3 & BPA DECK 5 WITHIN 1 BLOCK





420 20TH STREET NORTH, SUITE 2525 BIRMINGHAM, AL 35233

