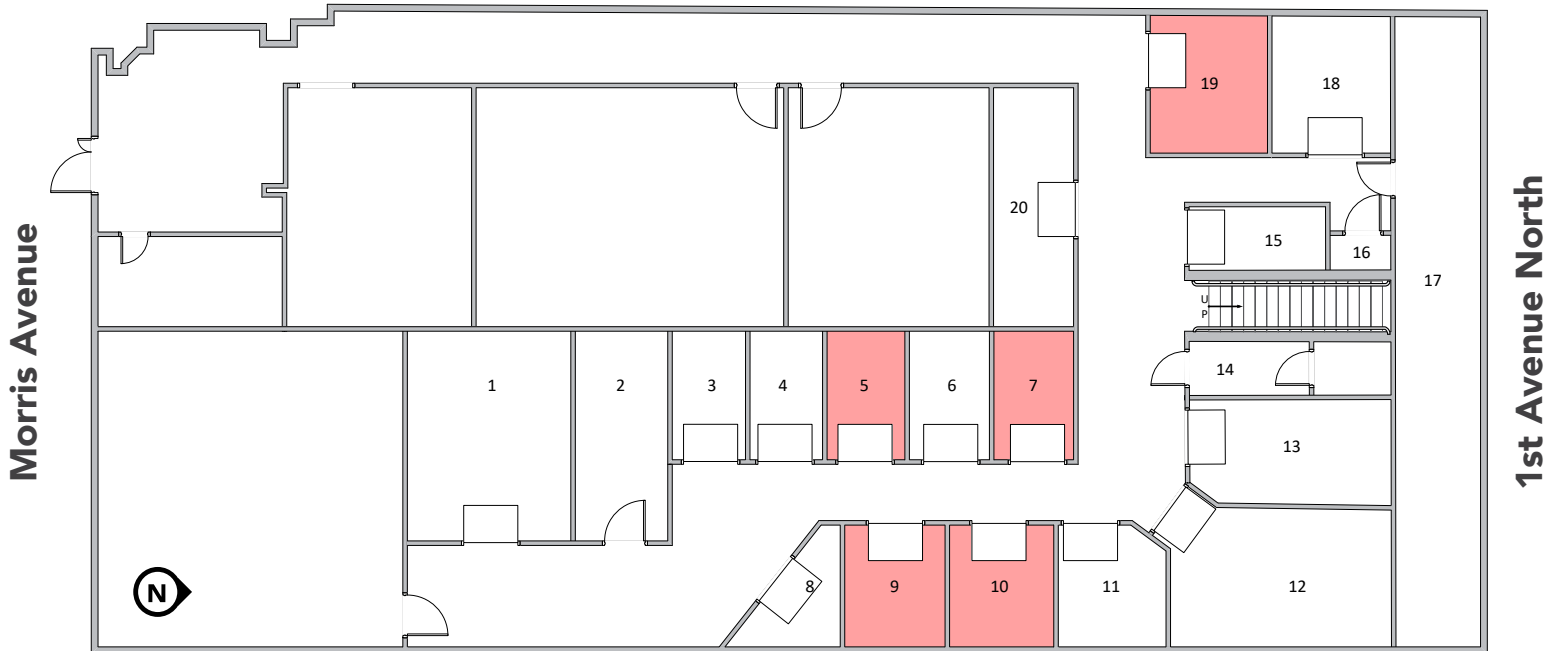


# STORAGE SPACE – 2121 1ST AVENUE NORTH, BIRMINGHAM, AL 35203

## Storage Units Available in Prime Location on Morris Avenue Level



| UNIT | SIZE SQFT | AVAILABILITY       | RENT    |
|------|-----------|--------------------|---------|
| 1    | 200 SF    | LEASED             | -       |
| 2    | 88 SF     | Building Storage   | -       |
| 3    | 53 SF     | LEASED             | -       |
| 4    | 53 SF     | LEASED             | -       |
| 5    | 53 SF     | AVAILABLE NOW      | \$50.00 |
| 6    | 53 SF     | LEASED             | -       |
| 7    | 53 SF     | AVAILABLE 8/1/2020 | \$50.00 |
| 8    | 30 SF     | LEASED             | -       |
| 9    | 80 SF     | AVAILABLE NOW      | \$75.00 |
| 10   | 90 SF     | AVAILABLE NOW      | \$80.00 |
| 11   | 70 SF     | LEASED             | -       |
| 12   | 126 SF    | LEASED             | -       |
| 13   | 70 SF     | LEASED             | -       |
| 14   | 56 SF     | Building Storage   | -       |
| 15   | 45 SF     | LEASED             | -       |
| 16   | 17 SF     | Building Storage   | -       |
| 17   | 255 SF    | Building Storage   | -       |
| 18   | 85 SF     | LEASED             | -       |
| 19   | 87 SF     | AVAILABLE NOW      | \$75.00 |
| 20   | 104 SF    | LEASED             | -       |



Jackie McGhee  
 jmcghee@harbertrealty.com  
 205.458.8138

2 North 20th Street  
 Suite 1700  
 Birmingham, AL 35203

HarbertRealty.com  
 205.323.2020

The information contained herein has been obtained from sources deemed reliable, however, HRS makes no guarantees, warranties or representation as to its completeness or accuracy thereof. The presentation of this property is submitted subject to errors, omissions, change of price or conditions, prior to sale or lease or withdrawal without notice.