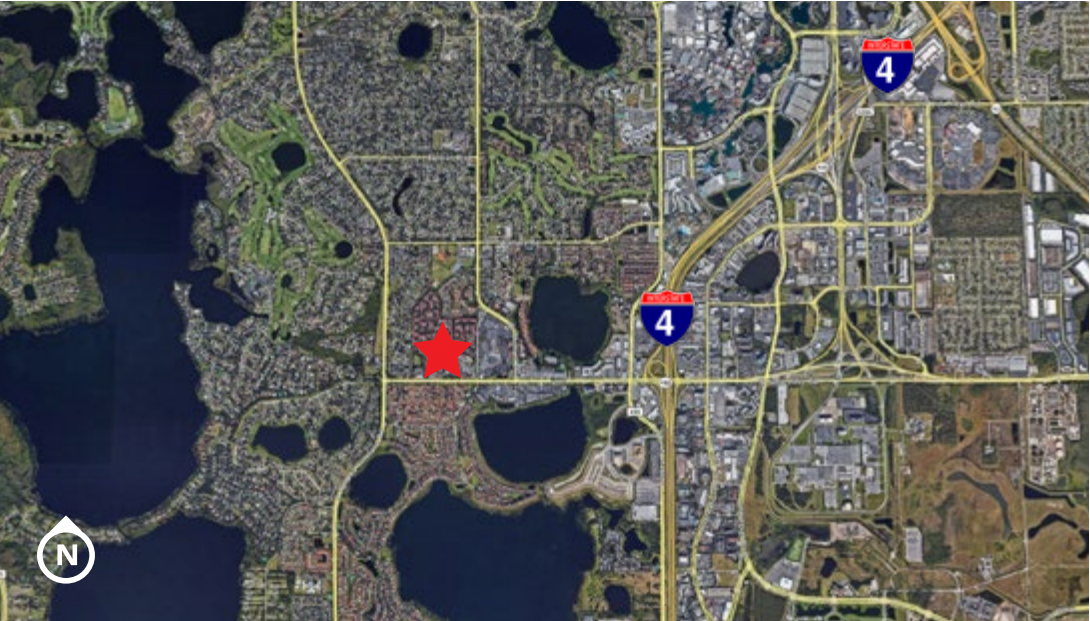


# SPACE FOR SUBLEASE

- Suites I201-203
- Lease Expiration: December 31, 2020
- Beautiful fully equipped Dance Studio totaling 6,300 RSF.
- 4 Studios, 2 offices, reception, kitchen, locker room and dressing room.
- Located in a highly desirable area of Orlando
- Please call for a private tour
- **SUBLEASE RATE: \$24.00 NNN**



### DEMOGRAPHICS:

#### POPULATION

1 mile	10,079
3 miles	43,082
5 miles	161,056

#### TRAFFIC COUNTS

±30,000 vehicles/day
Sand Lake Rd
±94,000 vehicles/day
I-4

#### DAYTIME BUSINESS POPULATION

1 mile	8,212
3 miles	58,711
5 miles	136,377

#### AVERAGE HH INCOME

1 mile	\$ 121,964
3 miles	\$ 132,294
5 miles	\$ 90,593



The information contained herein has been obtained from sources deemed reliable, however, HRS makes no guarantees, warranties or representation as to its completeness or accuracy thereof. The presentation of this property is submitted subject to errors, omissions, change of price or conditions, prior to sale or lease or withdrawal without notice.

**Buffy Gillette**  
 bgillette@harbertrealty.com  
 407.377.4043

2450 Maitland Pkwy  
 Suite 200  
 Maitland, FL 32751

HarbertRealty.com  
 407.377.4050

