

31 INVERNESS

c e n t e r

BIRMINGHAM, AL

OFFICE SPACE FOR LEASE

HARBERT
REALTY SERVICES

www.officeatinverness.com

BEST KNOWN OFFICE PARK IN 280 CORRIDOR

- Suite 50 - 1,780 rsf
- Suite 130 - 3,222 rsf
- Suite 300 - 7,621 rsf
- Suite 410 - 1,337 rsf
- Suite 525 - 2,839 rsf
- Suite 600 - 15,872 rsf

- **\$23.50/ RSF**
- Exceptional lake views in lush natural setting
- High-end, professional finishes
- Outdoor amenities
- Four (4) points of ingress/egress
- Professionally managed



Located in Birmingham's high profile Highway 280 Corridor, Inverness is easily accessible from literally any corner of Birmingham – 15 minutes from downtown Birmingham and only 1.8 miles from I-459, which connects with I-65, I-20 and I-59.



www.officeatinverness.com

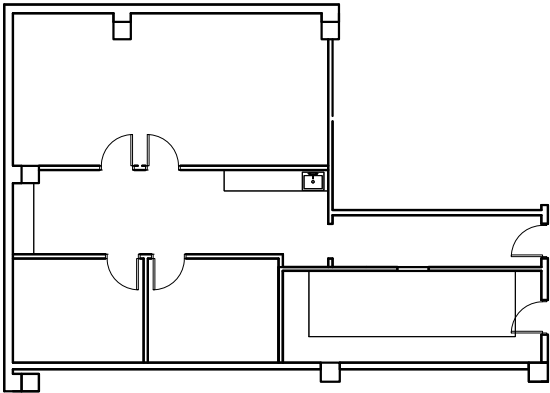
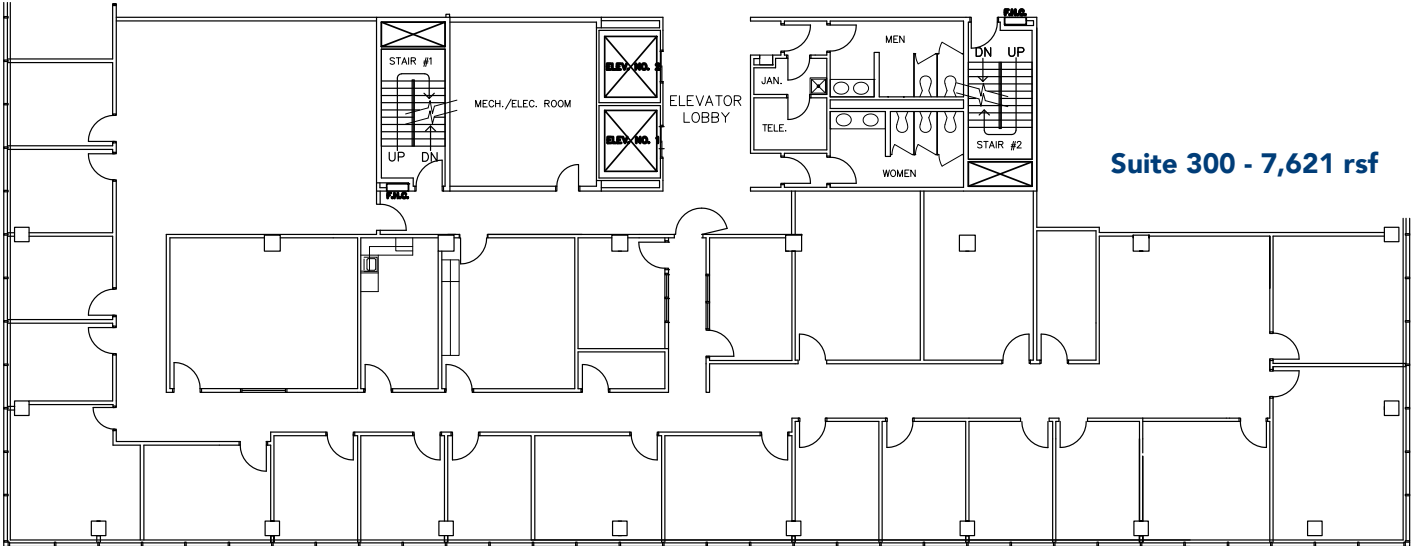


The information contained herein has been obtained from sources deemed reliable, however, HRS makes no guarantees, warranties or representation as to its completeness or accuracy thereof. The presentation of this property is submitted subject to errors, omissions, change of price or conditions, prior to sale or lease or withdrawal without notice.

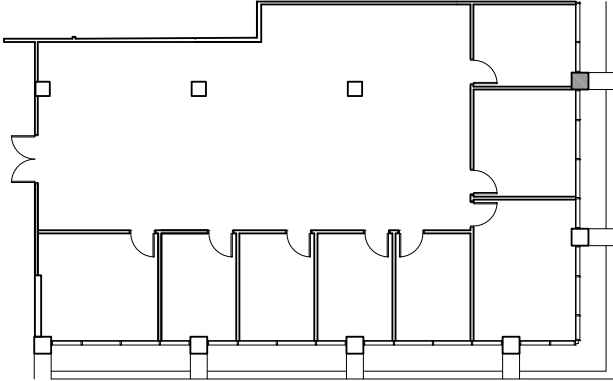
West Harris
 wharris@harbertrealty.com
 205.458.8127

2 North Twentieth Street
 Suite 1700
 Birmingham, AL 35203

HarbertRealty.com
 205.323.2020

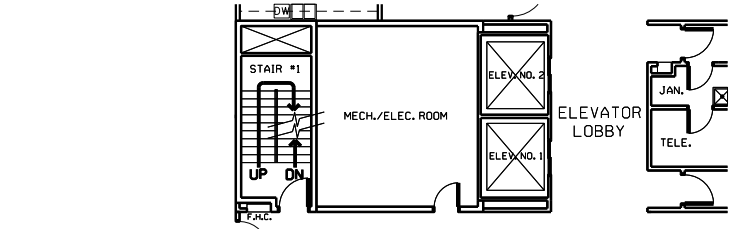


Suite 50 - 1,780 rsf

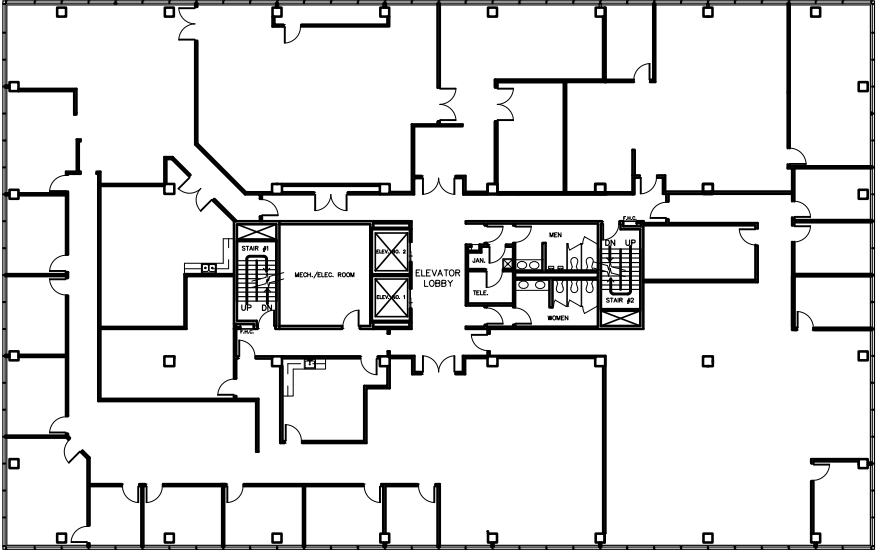
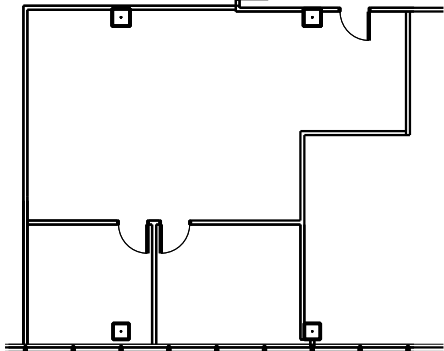


Suite 130 - 3,222 rsf

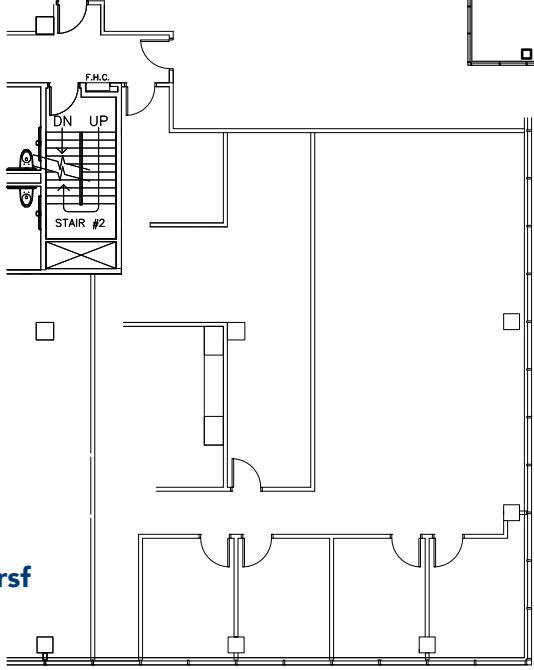
www.officeatinverness.com



Suite 410 - 1,337 rsf



Suite 600 - 15,872 rsf



Suite 525 - 2,839 rsf

www.officeatinverness.com



The information contained herein has been obtained from sources deemed reliable, however, HRS makes no guarantees, warranties or representation as to its completeness or accuracy thereof. The presentation of this property is submitted subject to errors, omissions, change of price or conditions, prior to sale or lease or withdrawal without notice.

West Harris
 wharris@harbertrealty.com
 205.458.8127

2 North Twentieth Street
 Suite 1700
 Birmingham, AL 35203

HarbertRealty.com
 205.323.2020