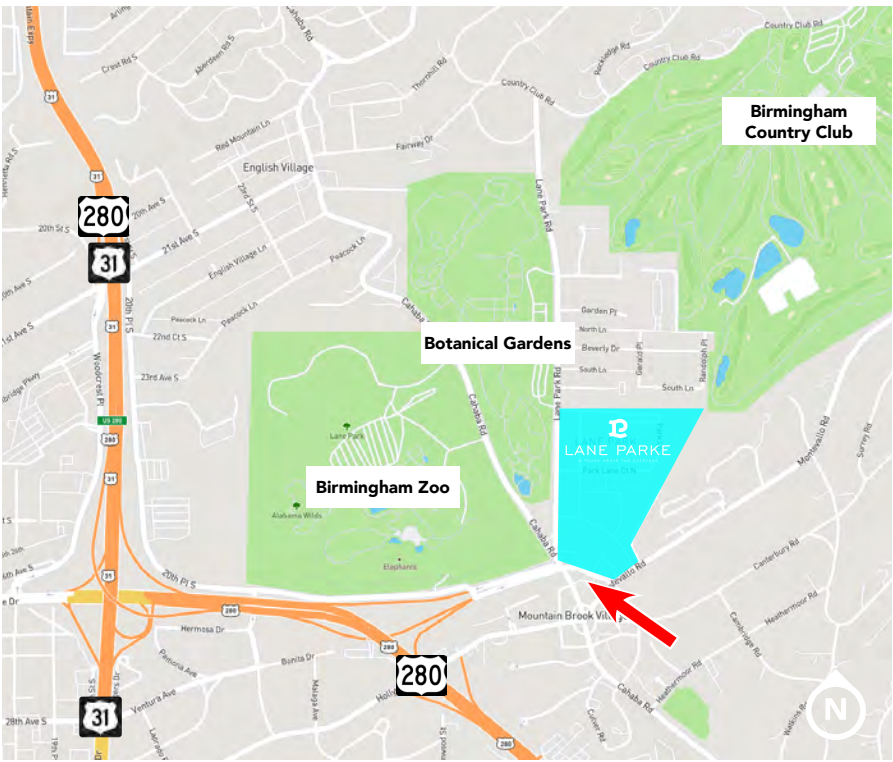




**RETAIL SPACE FOR LEASE**  
 2716 Culver Road, Mountain Brook, AL 35223

Former restaurant space with planned updates for lease in Mountain Brook Village



**LEASE RATE:**  
 Call For Pricing



**AVAILABLE SPACE:**  
 1,269 SF



**ZONING:**  
 Local Business District

[VIEW PERMITTED USES](#)



**LOCATION:**  
 Across the street from Lane Park in Mountain Brook Village



- UPDATES:**
- Space is currently in warm shell condition.
  - Sneaky Pete's fixtures have been removed except for the hood.
  - Generous TI Dollar Allowance Available



**JOHN TALLY**  
 jtally@harbertrealty.com | 205.757.0237

**For More Information: HarbertRealty.com**  
 2 North 20th Street, #1700, Birmingham, AL 35203

The information contained herein has been obtained from sources deemed reliable, however, HRS makes no guarantees, warranties or representation as to its completeness or accuracy thereof. The presentation of this property is submitted subject to errors, omissions, change of price or conditions, prior to sale or lease or withdrawal without notice.

# RETAIL SPACE FOR LEASE

2716 Culver Road, Mountain Brook, AL 35223

Former restaurant space with planned updates for lease in Mountain Brook Village



**HARBERT**  
REALTY SERVICES

**JOHN TALLY**

[jtally@harbertrealty.com](mailto:jtally@harbertrealty.com) | 205.757.0237

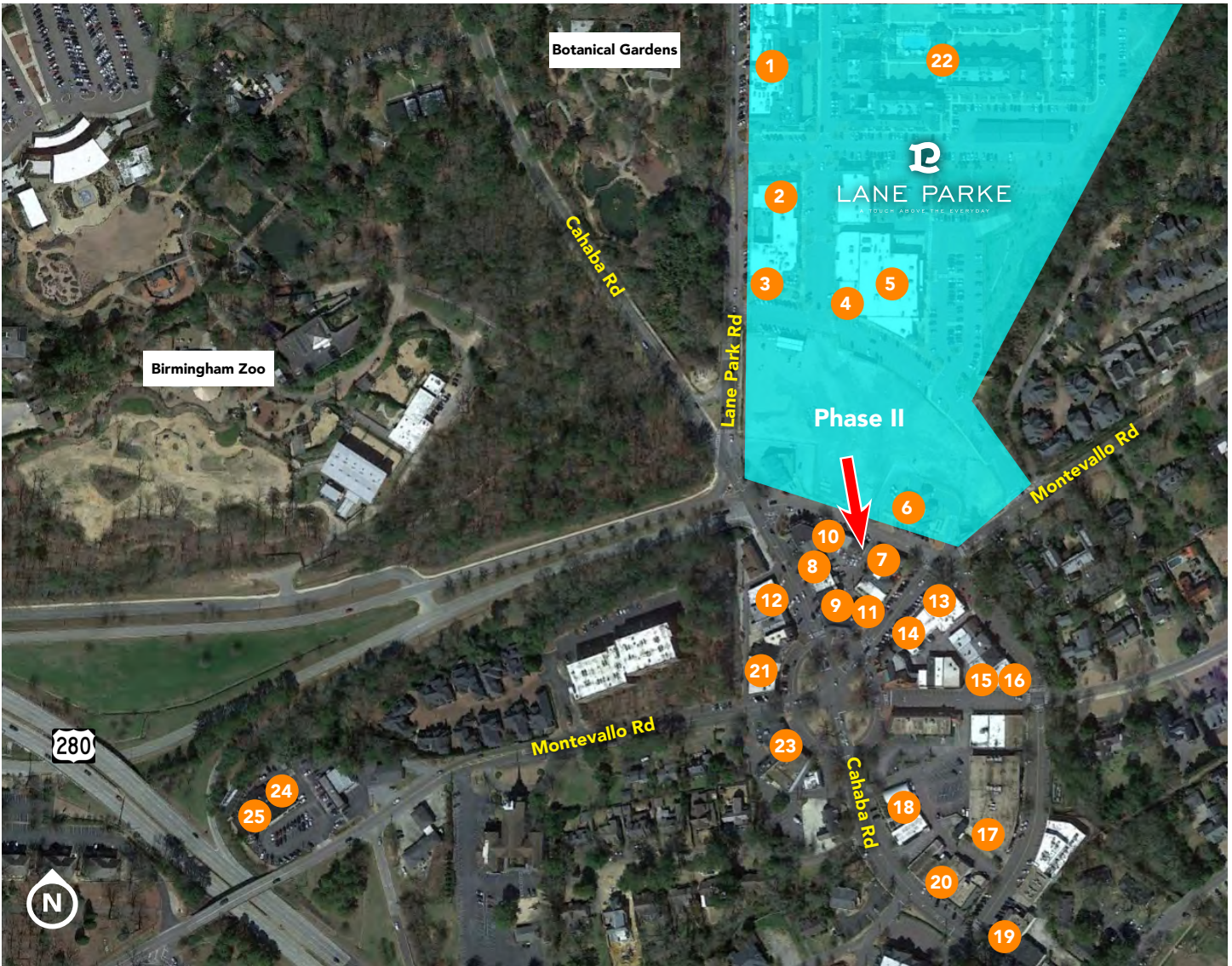
**For More Information: [HarbertRealty.com](http://HarbertRealty.com)**  
2 North 20th Street, #1700, Birmingham, AL 35203

The information contained herein has been obtained from sources deemed reliable, however, HRS makes no guarantees, warranties or representation as to its completeness or accuracy thereof. The presentation of this property is submitted subject to errors, omissions, change of price or conditions, prior to sale or lease or withdrawal without notice.

# RETAIL SPACE FOR LEASE

2716 Culver Road, Mountain Brook, AL 35223

Former restaurant space with planned updates for lease in Mountain Brook Village



- |                         |                             |                                     |                          |
|-------------------------|-----------------------------|-------------------------------------|--------------------------|
| 1. Grand Bohemian Hotel | 7. Another Broken Egg       | 13. Ishi? Luxe                      | 19. Brick and Tin        |
| 2. Sol Y Luna Tapas     | 8. Mountain Brook Creamery  | 14. Eleven Eleven                   | 20. Davenport's Pizza    |
| 3. Char Bar             | 9. Abhi Eatery and Bar      | 15. The Dande Lion Antiques         | 21. Starbucks            |
| 4. Post Office Pies     | 10. Watkins Branch          | 16. Blueroot Outpost Health Food    | 22. Lane Park Apartments |
| 5. Publix               | 11. Carrigan's Public House | 17. Olexa's Catering Cafe and Cakes | 23. Bromberg's           |
| 6. Regions Bank         | 12. Ritch's Pharmacy        | 18. Leaf and Petal Garden Center    | 24. Over Easy            |
|                         |                             |                                     | 25. Mexico Lindo         |

POPULATION	1 MILE	3 MILES	5 MILES
2021 Estimated Population	5,980	74,211	168,387
2026 Projected Population	5,891	73,953	167,705
2020 Census Population	5,952	73,910	169,165

INCOME	1 MILE	3 MILES	5 MILES
2021 Estimated Average Household Income	\$233,850	\$130,837	\$107,375
2021 Estimated Median Household Income	\$136,829	\$86,656	\$76,505
2021 Estimated Per Capita Income	\$104,185	\$59,063	\$47,850

HOUSEHOLDS	1 MILE	3 MILES	5 MILES
2021 Estimated Households	2,663	33,233	74,480
2026 Projected Households	2,726	34,484	77,173
2020 Census Households	2,694	32,839	74,756

**Mountain Brook Median Household Income: \$130,721**



**JOHN TALLY**  
jtally@harbertrealty.com | 205.757.0237

**For More Information: HarbertRealty.com**  
2 North 20th Street, #1700, Birmingham, AL 35203

The information contained herein has been obtained from sources deemed reliable, however, HRS makes no guarantees, warranties or representation as to its completeness or accuracy thereof. The presentation of this property is submitted subject to errors, omissions, change of price or conditions, prior to sale or lease or withdrawal without notice.