

OFFICE SPACE FOR LEASE



MAITLAND GREEN II

2290 Lucien Way
Maitland, FL 32751

Maitland Green II is a 4-story Class A office building with approximately 84,000 RSF and available space ranging from 1,187 - 6,908 RSF.

Located in the highly desirable Maitland Center Office Park, this corporate building provides efficient office suites for all professional businesses.

[Virtual Tour](#)

[Drone Video](#)

NEW BROKER INCENTIVE

- 5% Commission
- 100% Paid at Signing

RSF Available
1,187 - 6,908



For more information, contact:

Damien Madsen

(407) 256.2844

DMadsen@harbertrealty.com

For more information, contact:

Josh Smith

(407) 377.4050

JSmith@harbertrealty.com

Property Owned &
Operated by:



SPACE AVAILABLE

Suite	RSF
125	3,604
150	4,676
220	1,187
260	3,752
300 (Demisable)	<u>6,908</u> Virtual Tour

Virtual Tour: [Click Suite RSF](#)



BUILDING FEATURES & AMENITIES

- ▶ 84,000 RSF Class A 4-Story Building
- ▶ On-Site Institutional Property Management
- ▶ 4/1000 Parking Ratio
- ▶ Building Cafe located in Adjacent Building
- ▶ **New Building Feature: Advanced and Targeted Cleanings of Common Area Spaces**
- ▶ Large Centrally Located Courtyard for Collaborative Distancing Area



For more information, contact:

Damien Madsen
 (407) 256.2844
 DMadsen@harbertrealty.com

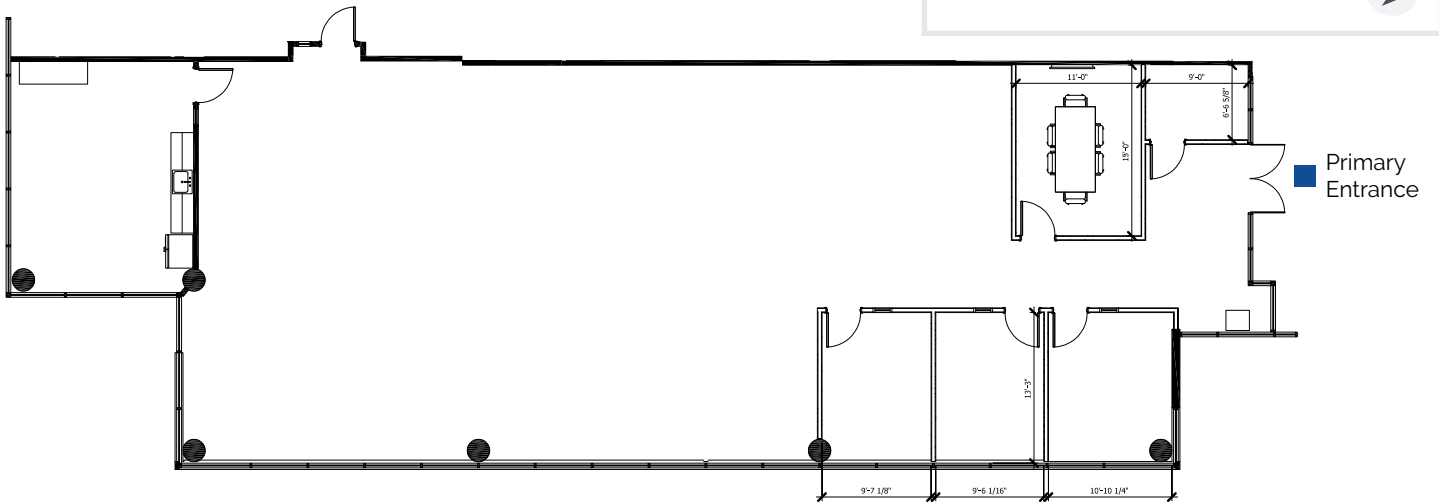
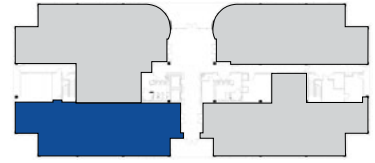
Josh Smith
 (407) 377.4050
 JSmith@harbertrealty.com

Property Owned &
 Operated by:



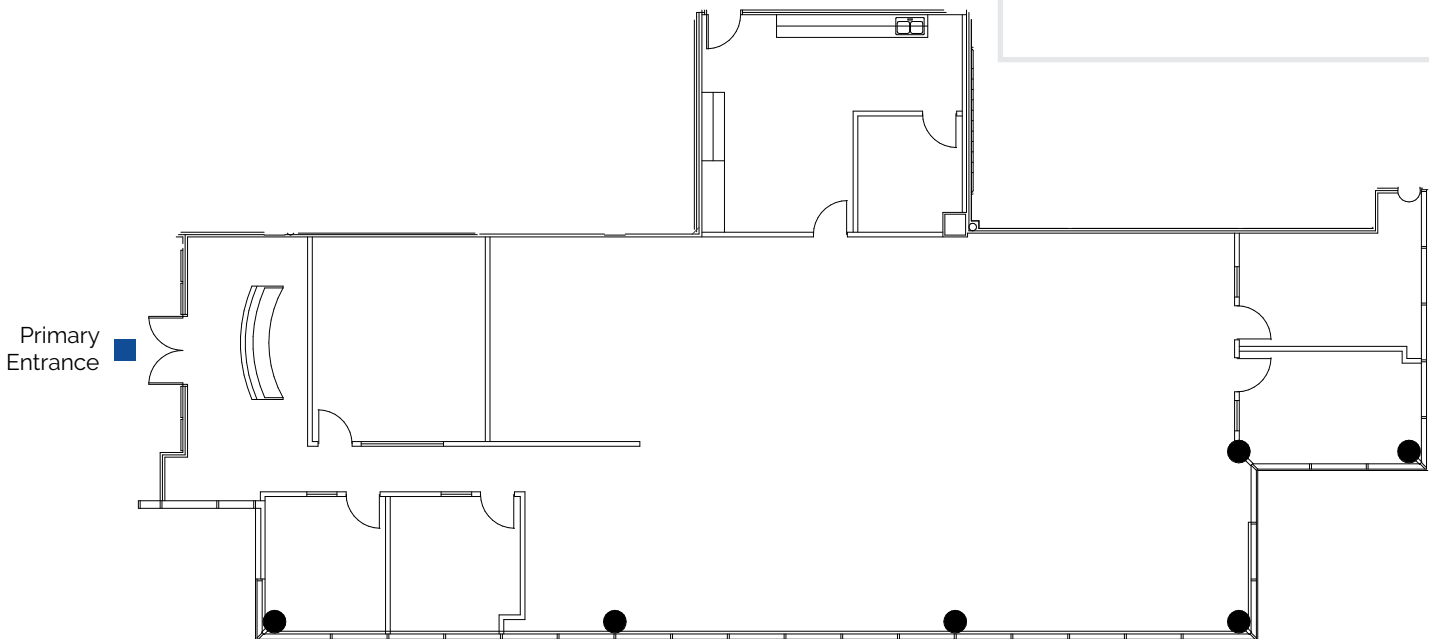
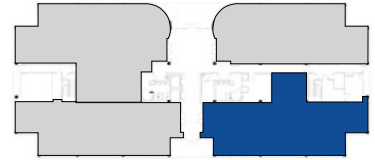
1st Floor

Suite 125: 3,604 RSF



1st Floor

Suite 150: 4,676 RSF

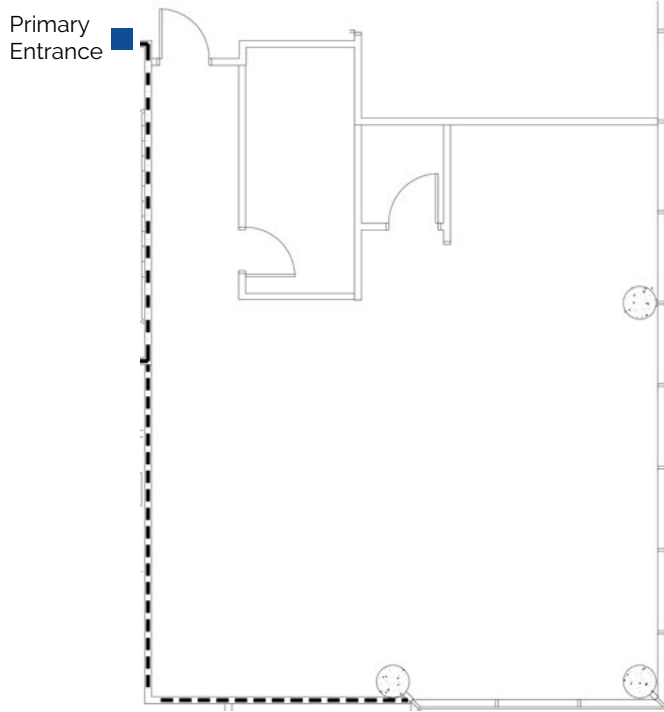


For more information, contact:
Damien Madsen
(407) 256.2844
DMadsen@harbertrealty.com

Josh Smith
(407) 377.4050
JSmith@harbertrealty.com

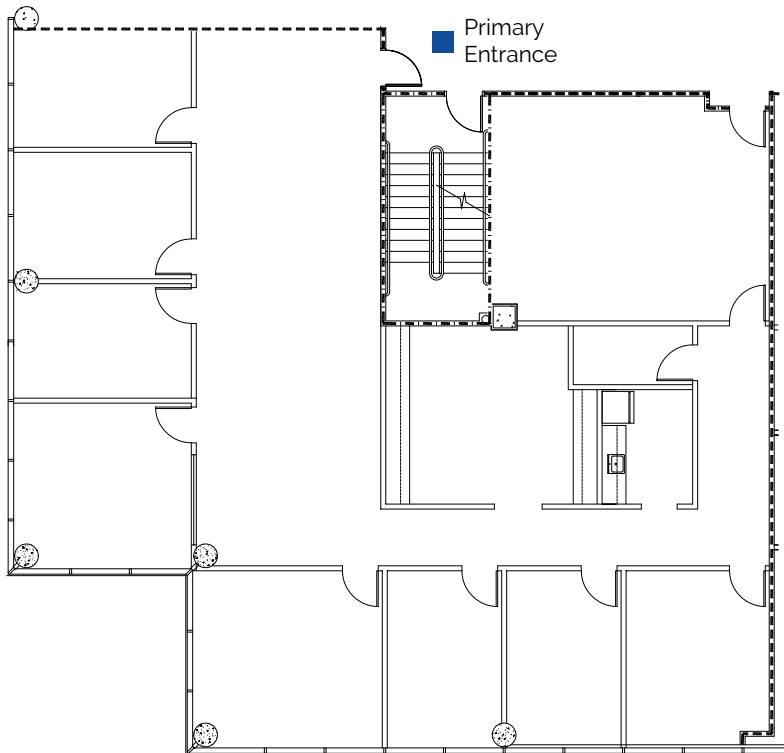
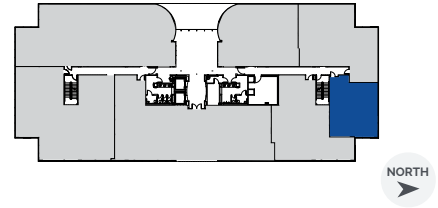
Property Owned & Operated by:





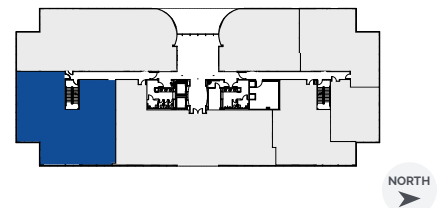
2nd Floor

Suite 220: 1,187 RSF



2nd Floor

Suite 260: 3,752 RSF



For more information, contact:

Damien Madsen

(407) 256.2844

DMadsen@harbertrealty.com

Josh Smith

(407) 377.4050

JSmith@harbertrealty.com

Property Owned &
Operated by:



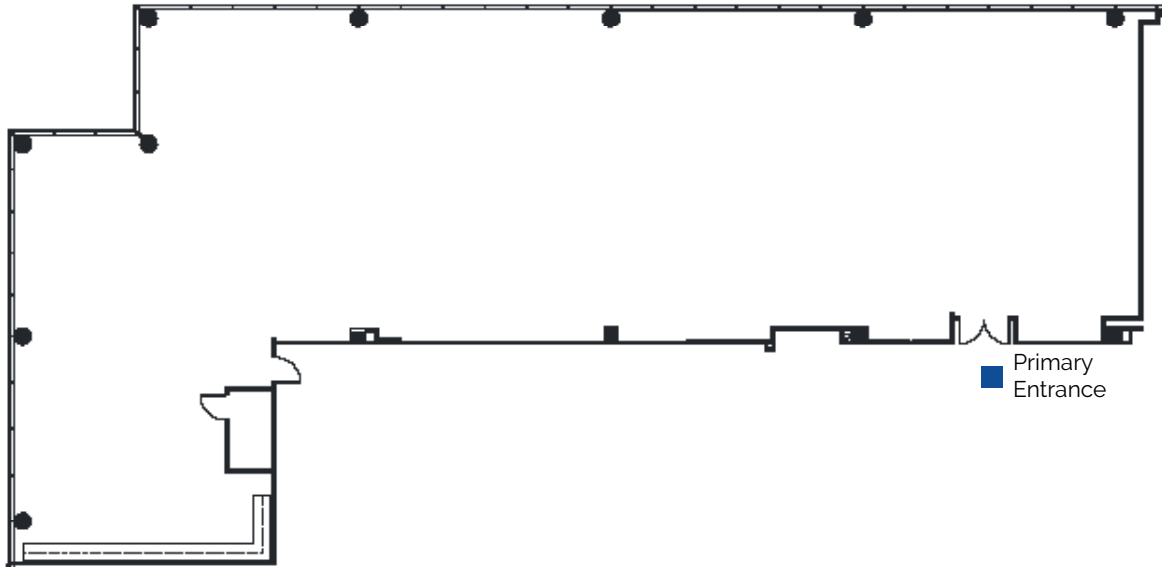
3rd
Floor

Suite 300: 6,908 RSF



Suite is demisable

[Virtual Tour](#)



Primary
Entrance

For more information, contact:

Damien Madsen

(407) 256.2844

DMadsen@harbertrealty.com

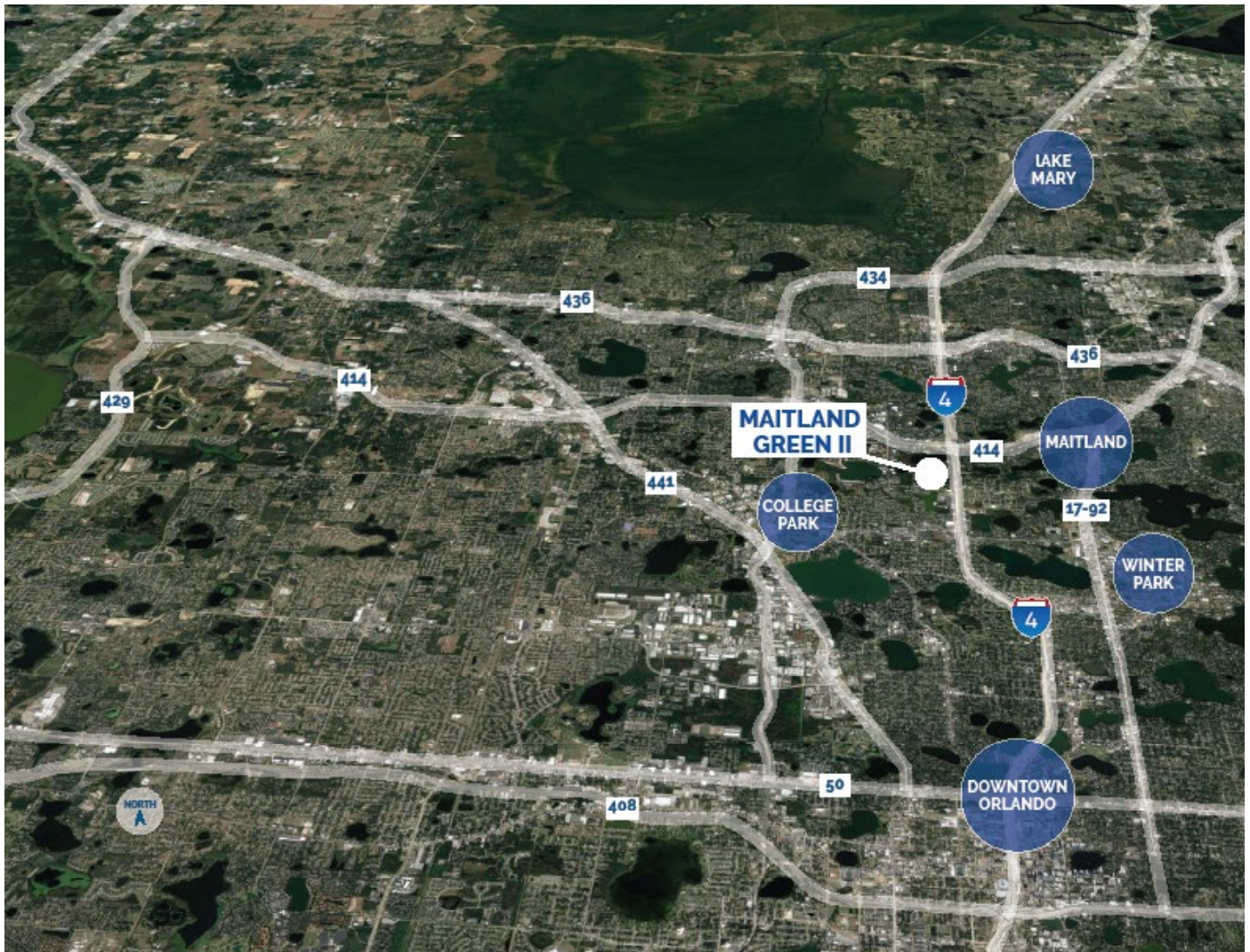
Josh Smith

(407) 377.4050

JSmith@harbertrealty.com

Property Owned &
Operated by:





LOCATION HIGHLIGHTS

- ▶ Well-positioned within Maitland Center Office Park, one of Orlando's largest office submarkets
- ▶ Conveniently less than a half mile from I-4 & providing easy access to Downtown Orlando
- ▶ Close to business hotels, restaurants, retail and the RDV Sportsplex
- ▶ Ideally located in Central Florida's top executive housing market & the following established neighborhoods
 - Maitland: 3-Miles
 - Winter Park: 5-Miles
 - College Park: 7-Miles
 - Downtown: 8-Miles
 - Lake Mary: 12-Miles

For more information, contact:

Damien Madsen
 (407) 256.2844
 DMadsen@harbertrealty.com

Josh Smith
 (407) 377.4050
 JSmith@harbertrealty.com

Property Owned &
 Operated by:

