



COMMERCIAL LAND FOR SALE

Remington Dr, Oviedo, FL 32765

Great opportunity to develop near UCF.

PROPERTY OVERVIEW

- Zoned PCD for C1 & C2 uses.
- Conditional uses pre-approved.
- 280 feet of frontage directly on SR 434.
- Curb cut already constructed on SR 434.
- Daily traffic count of nearly 45,000.
- Water and sewer at property line.
- Perfect for medical, office, retail or national brand restaurant with **pre-approved drive thru lane**.
- 2 miles north of the main entrance to the University of Central Florida which has 71,948 students enrolled.
- 3 miles north of Central Florida Research Park, a 1,026 acre office park that employs more than 10,000 employees.
- Strong demographics

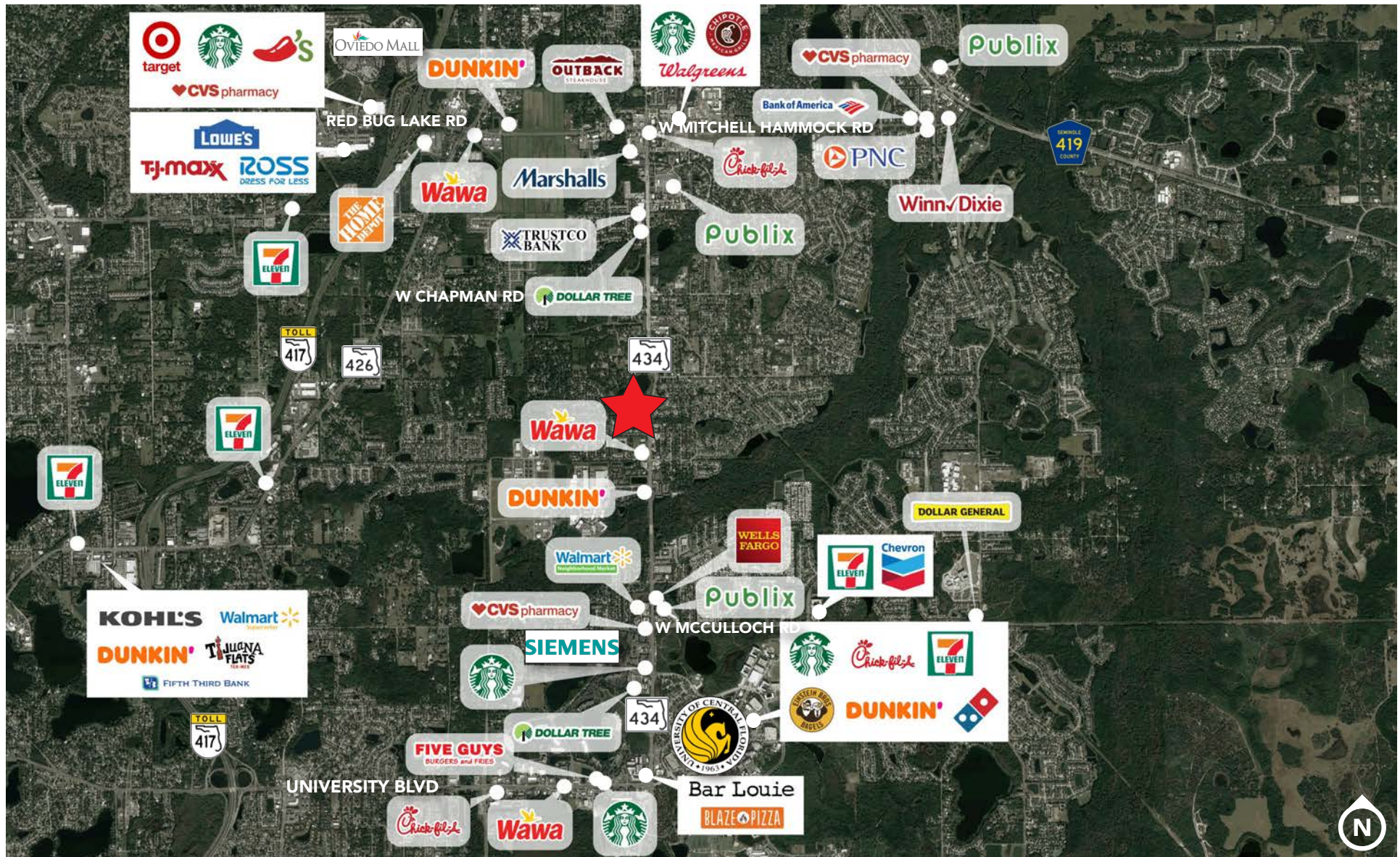


HARBERT
REALTY SERVICES

COMMERCIAL LAND FOR SALE

Remington Dr, Oviedo, FL 32765

Commercially zoned corner location vacant land site for sale with direct State Road 434 curb cut



KEVIN DELAROSA
kdelarosa@harbertrealty.com | 407.761.6190

DAMIEN MADSEN
dmadsen@harbertrealty.com | 407.256.2844

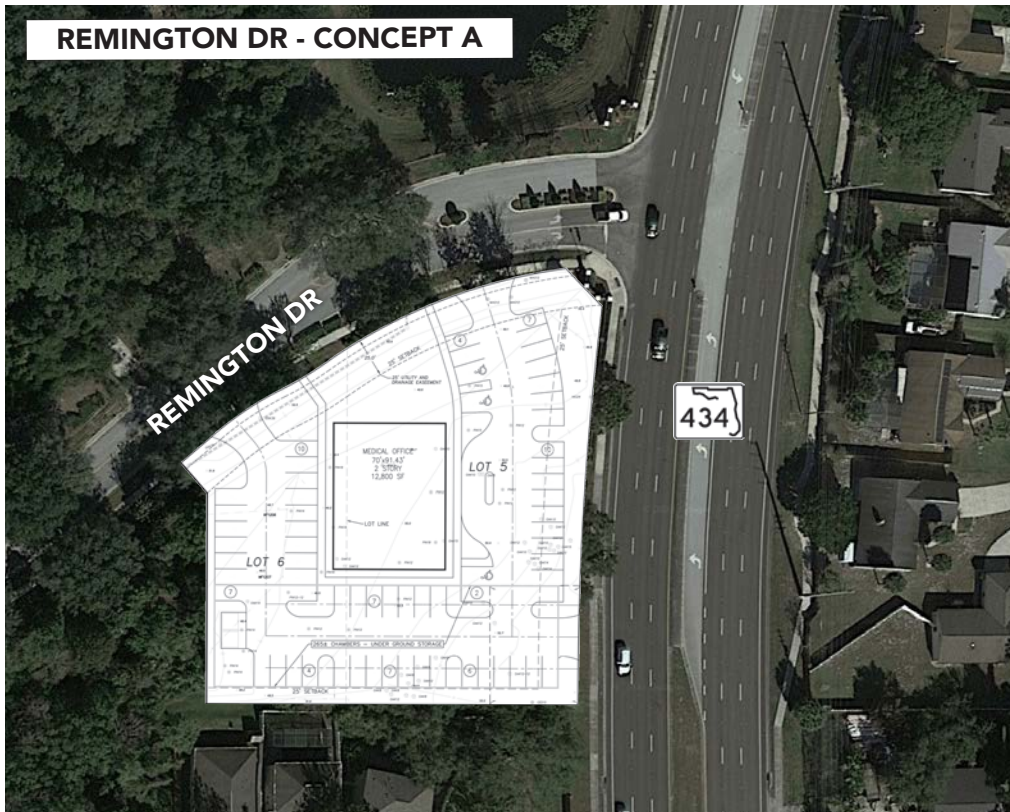
For More Information: HarbertRealty.com
400 S Park Ave, Suite 225
Winter Park, FL 32789

COMMERCIAL LAND FOR SALE

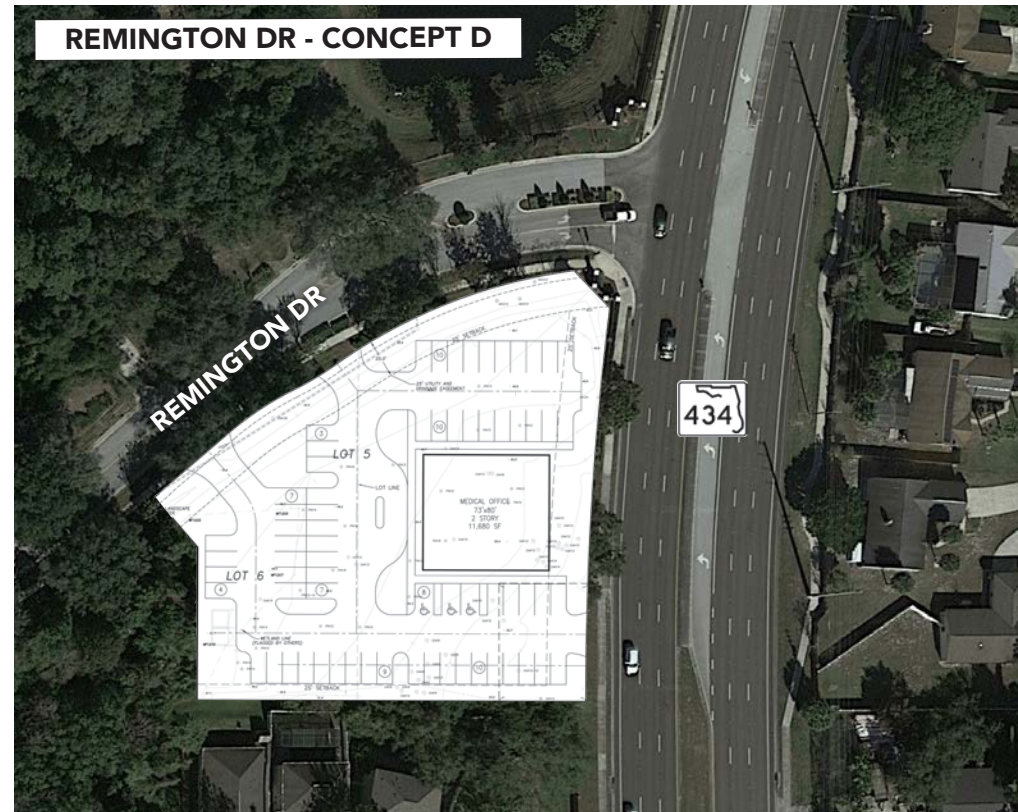
Remington Dr, Oviedo, FL 32765

Commercially zoned corner location vacant land site for sale with direct State Road 434 curb cut

REMINGTON DR - CONCEPT A



REMINGTON DR - CONCEPT D



HARBERT
REALTY SERVICES

KEVIN DELAROSA

kdelarosa@harbertrealty.com | 407.761.6190

DAMIEN MADSEN

dmadsen@harbertrealty.com | 407.256.2844

For More Information: HarbertRealty.com

400 S Park Ave, Suite 225

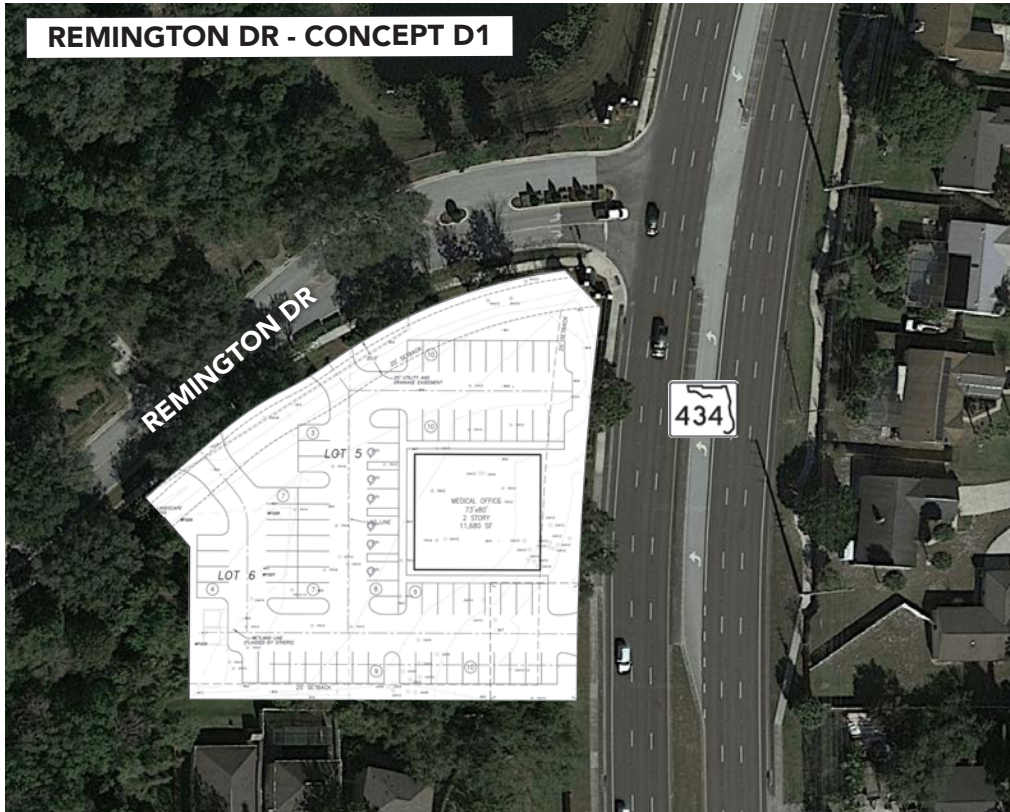
Winter Park, FL 32789

COMMERCIAL LAND FOR SALE

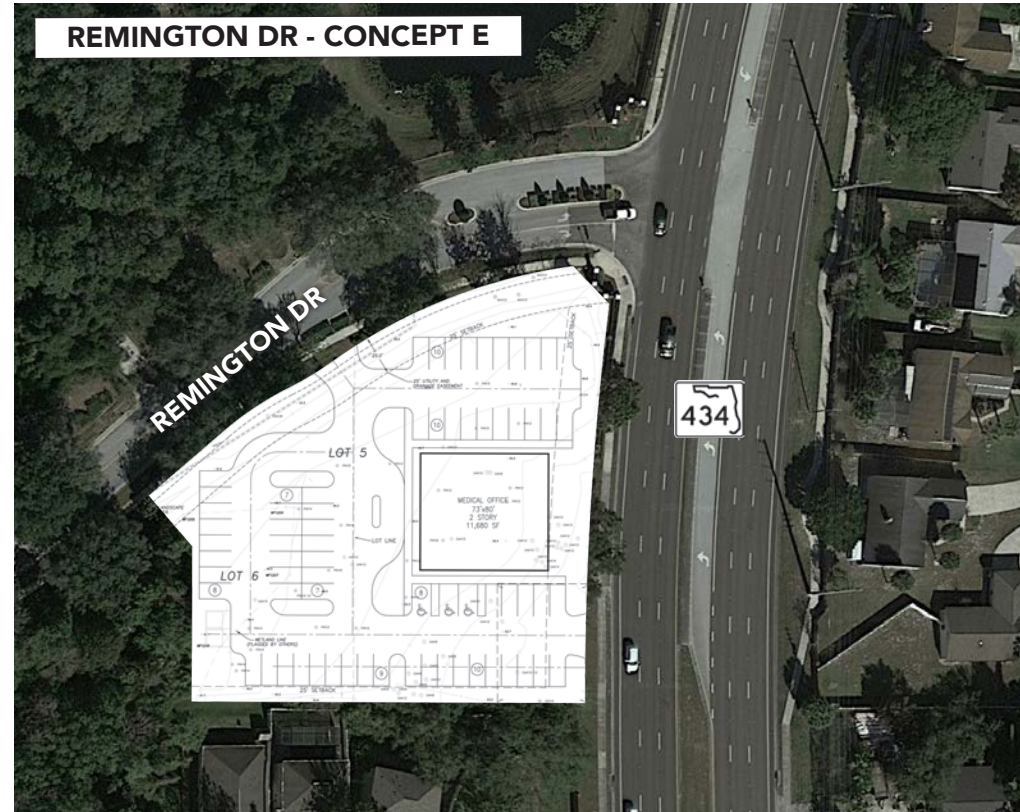
Remington Dr, Oviedo, FL 32765

Commercially zoned corner location vacant land site for sale with direct State Road 434 curb cut

REMINGTON DR - CONCEPT D1



REMINGTON DR - CONCEPT E



HARBERT
REALTY SERVICES

KEVIN DELAROSA

kdelarosa@harbertrealty.com | 407.761.6190

DAMIEN MADSEN

dmadsen@harbertrealty.com | 407.256.2844

For More Information: HarbertRealty.com

400 S Park Ave, Suite 225

Winter Park, FL 32789