



OFFICE BUILDING FOR LEASE

631 W Morse Blvd, Winter Park, FL 32789

Finest Class "A" building in Winter Park

PROPERTY HIGHLIGHTS

- Beautifully maintained property with lush, well-manicured landscaping
- Direct and immediate access to covered and secure parking; access to building via a sky bridge
- Outstanding visibility along Morse Blvd, one of Winter Park's main thoroughfares
- C-2 zoning allows for a wide range of commercial uses
- Incredible signage opportunity at lighted corner in the heart of Winter Park's financial district
- Within close proximity to area restaurants and shopping on Park Avenue and North Orlando Ave



ASKING RATE:

Negotiable



AVAILABILITY:

5,000-28,000± rsf



ZONING:

C-2



PARKING:

Covered and secure parking stalls



YEAR BUILT:

2001



HARBERT
REALTY SERVICES

DAMIEN MADSEN

dmadsen@harbertrealty.com | 407.256.2844

JOSH SMITH

jsmith@harbertrealty.com | 407.377.4050

For More Information: HarbertRealty.com
400 S Park Ave, Suite 225, Winter Park, FL 32789

The information contained herein has been obtained from sources deemed reliable, however, HRS makes no guarantees, warranties or representation as to its completeness or accuracy thereof. The presentation of this property is submitted subject to errors, omissions, change of price or conditions, prior to sale or lease or withdrawal without notice.

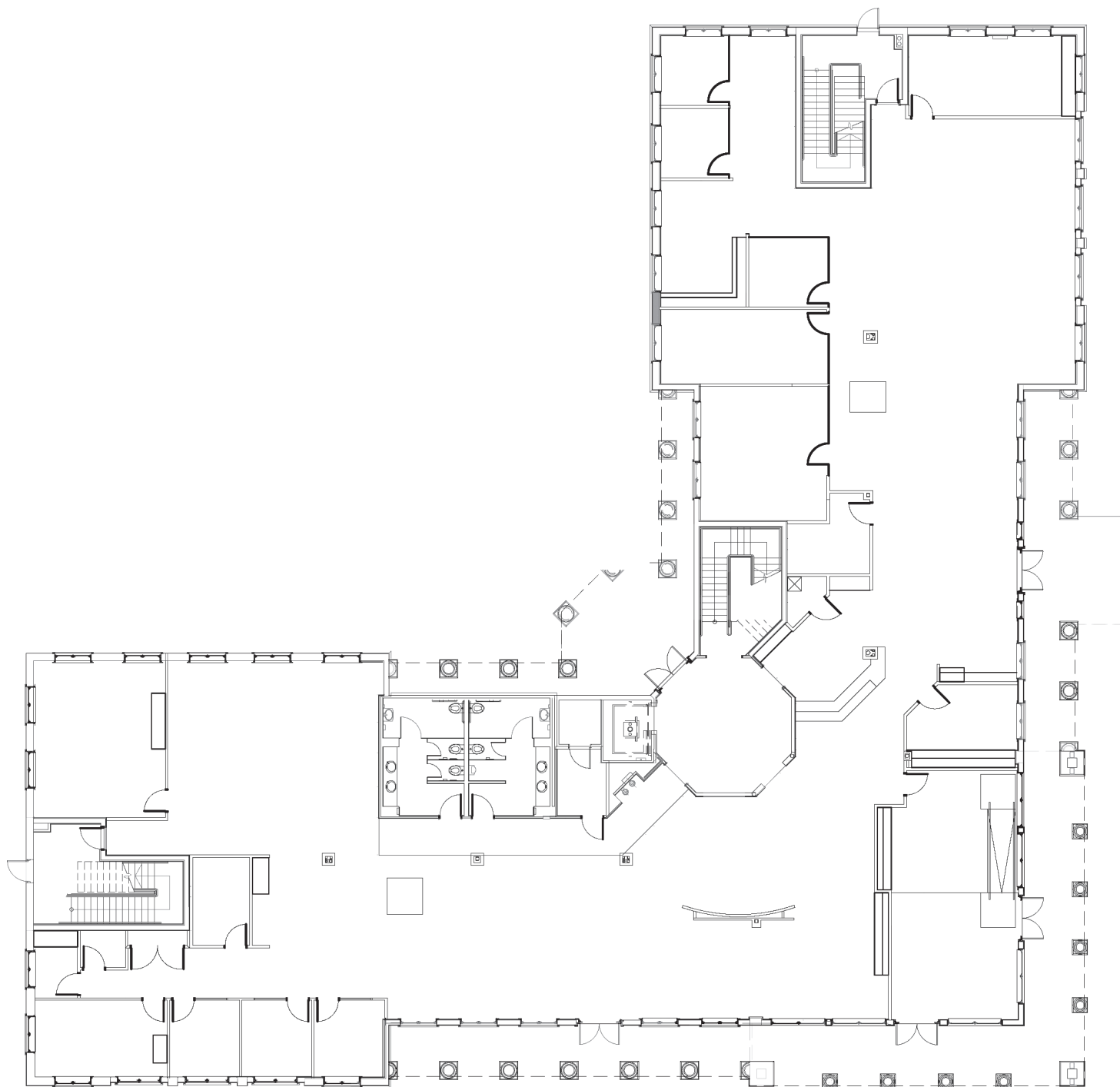
OFFICE BUILDING FOR LEASE

631 W Morse Blvd, Winter Park, FL 32789

FIRST FLOOR

12,460± RSF*

Potential to demise



HARBERT
REALTY SERVICES

DAMIEN MADSEN

dmadsen@harbertrealty.com | 407.256.2844

JOSH SMITH

jsmith@harbertrealty.com | 407.377.4050

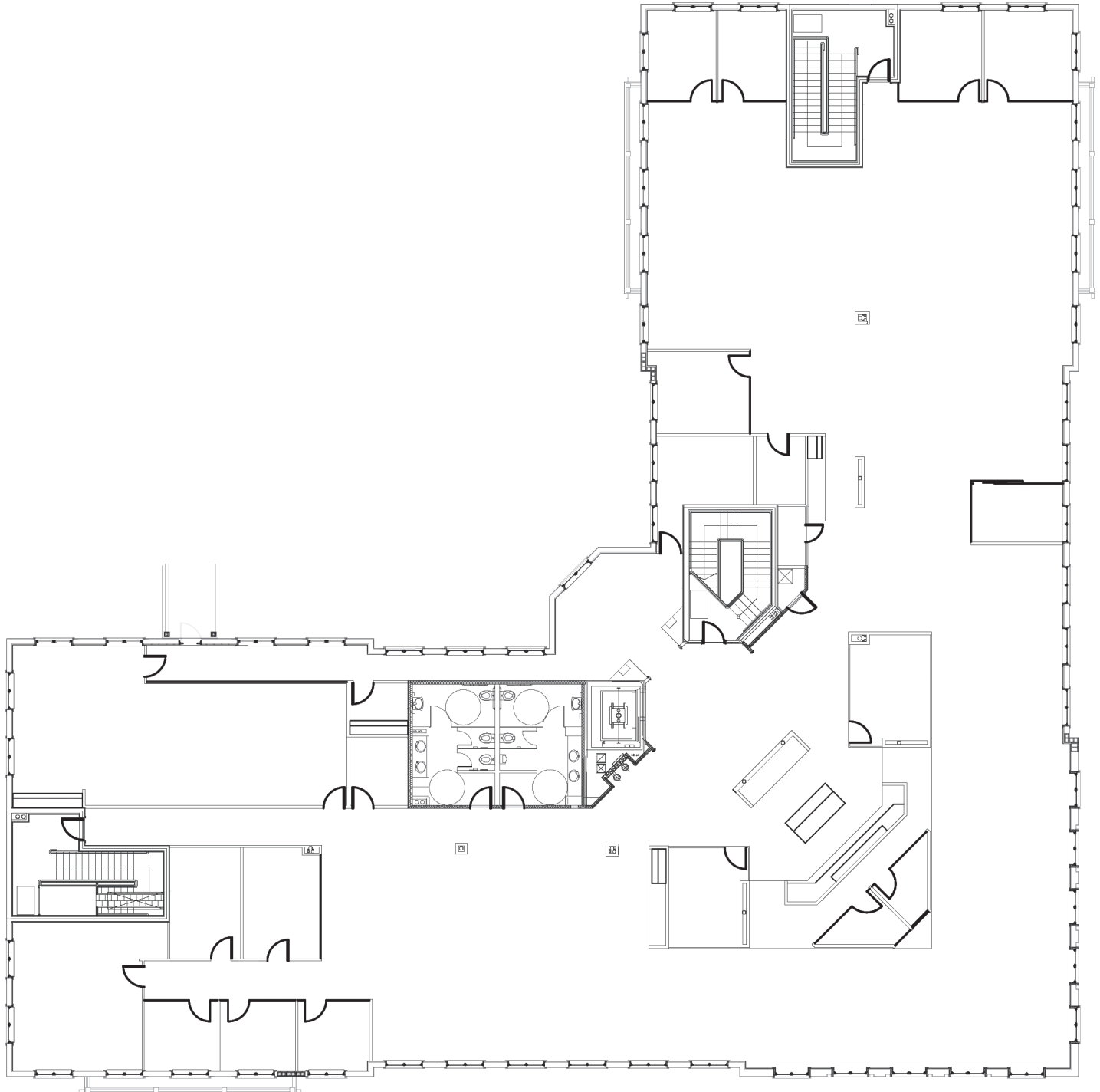
For More Information: HarbertRealty.com
400 S Park Ave, Suite 225, Winter Park, FL 32789

OFFICE BUILDING FOR LEASE

631 W Morse Blvd, Winter Park, FL 32789

SECOND FLOOR

15,360± RSF



HARBERT
REALTY SERVICES

DAMIEN MADSEN

dmadsen@harbertrealty.com | 407.256.2844

JOSH SMITH

jsmith@harbertrealty.com | 407.377.4050

For More Information: HarbertRealty.com
400 S Park Ave, Suite 225, Winter Park, FL 32789

OFFICE BUILDING FOR LEASE

631 W Morse Blvd, Winter Park, FL 32789

EXTERIOR PHOTOS



HARBERT
REALTY SERVICES

DAMIEN MADSEN

dmadsen@harbertrealty.com | 407.256.2844

JOSH SMITH

jsmith@harbertrealty.com | 407.377.4050

For More Information: HarbertRealty.com

400 S Park Ave, Suite 225, Winter Park, FL 32789

OFFICE BUILDING FOR LEASE

631 W Morse Blvd, Winter Park, FL 32789

INTERIOR PHOTOS



HARBERT
REALTY SERVICES

DAMIEN MADSEN

dmadsen@harbertrealty.com | 407.256.2844

JOSH SMITH

jsmith@harbertrealty.com | 407.377.4050

For More Information: [HarbertRealty.com](https://www.HarbertRealty.com)

400 S Park Ave, Suite 225, Winter Park, FL 32789