



OFFICE BUILDING FOR LEASE

398 W Morse Blvd, Winter Park, FL 32789

Nestled along the brick avenues, amongst the mature live oaks that create a natural canopy with shading

PROPERTY HIGHLIGHTS

- Beautifully maintained property in the heart of Winter Park
- Outstanding visibility along Morse Blvd, one of Winter Park's main thoroughfares
- C-2 zoning allows for a wide range of commercial uses
- Incredible signage opportunity at a hard corner in the heart of Winter Park's financial district
- Within close proximity to area restaurants and shopping on Park Avenue
- Within walking distance to the Winter Park Sunrail Station



ASKING RATE:

Negotiable



AVAILABILITY:

3,623± rsf*

***Available 1Q 2024**



ZONING:

C-2



PARKING:

Ample surface parking



YEAR BUILT:

1998



HARBERT
REALTY SERVICES

DAMIEN MADSEN

dmadsen@harbertrealty.com | 407.256.2844

JOSH SMITH

jsmith@harbertrealty.com | 407.377.4050

For More Information: [HarbertRealty.com](https://www.harbertrealty.com)
400 S Park Ave, Suite 225, Winter Park, FL 32789

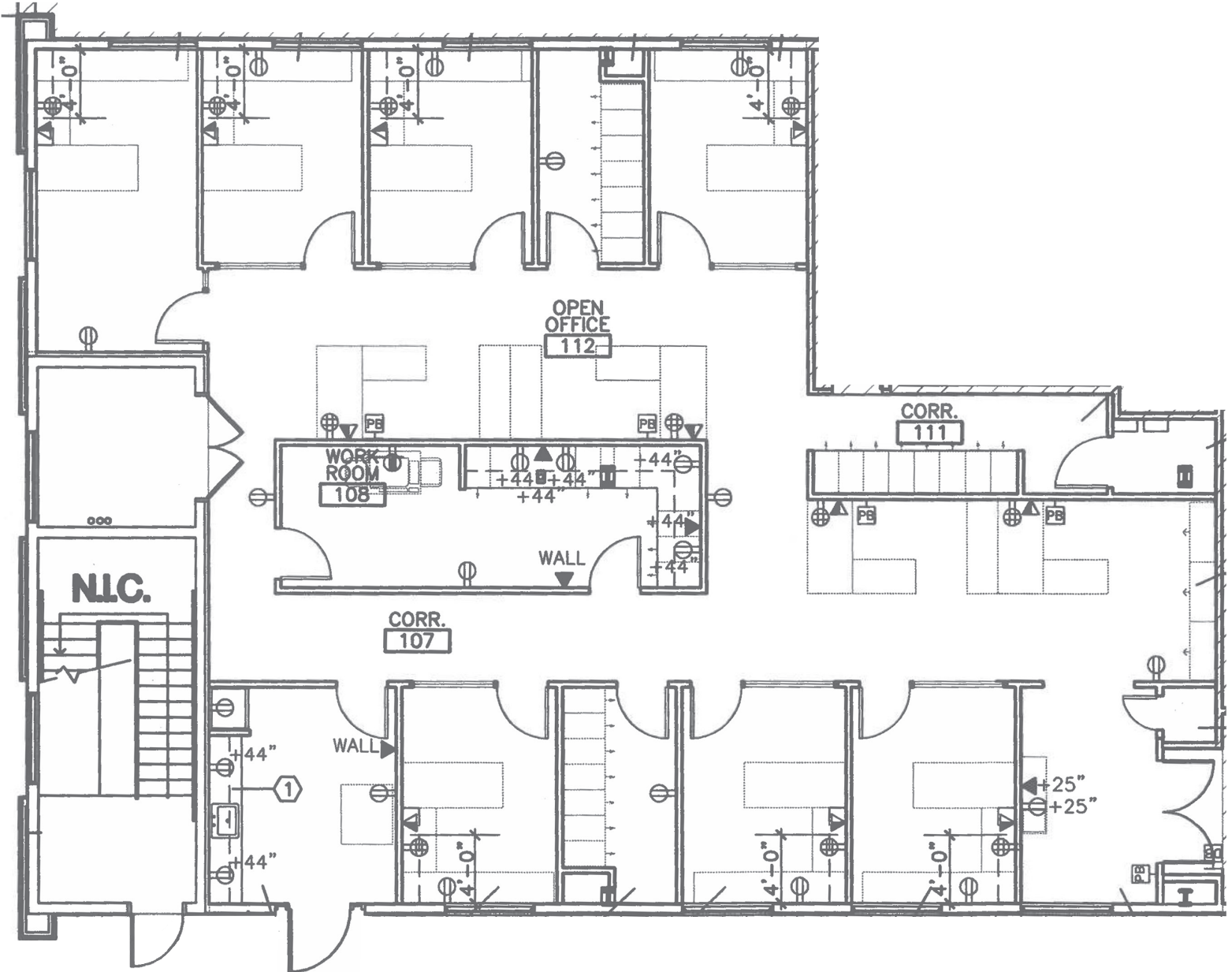
The information contained herein has been obtained from sources deemed reliable, however, HRS makes no guarantees, warranties or representation as to its completeness or accuracy thereof. The presentation of this property is submitted subject to errors, omissions, change of price or conditions, prior to sale or lease or withdrawal without notice.

OFFICE BUILDING FOR LEASE

398 W Morse Blvd, Winter Park, FL 32789

FIRST FLOOR

SUITE 125 -3,623± RSF



HARBERT
REALTY SERVICES

DAMIEN MADSEN

dmadsen@harbertrealty.com | 407.256.2844

JOSH SMITH

jsmith@harbertrealty.com | 407.377.4050

For More Information: HarbertRealty.com

400 S Park Ave, Suite 225, Winter Park, FL 32789

OFFICE BUILDING FOR LEASE

398 W Morse Blvd, Winter Park, FL 32789

PHOTOS



HARBERT
REALTY SERVICES

DAMIEN MADSEN

dmadsen@harbertrealty.com | 407.256.2844

JOSH SMITH

jsmith@harbertrealty.com | 407.377.4050

*For More Information: HarbertRealty.com
400 S Park Ave, Suite 225, Winter Park, FL 32789*