

OFFICE SPACE FOR LEASE



MAITLAND GREEN I

601 S. Lake Destiny Road
Maitland, FL 32751

Maitland Green I is a 4-story Class A office building with approximately 111,000 RSF and available space ranging from 2,019-16,827 RSF.

Located in the highly desirable Maitland Center Office Park, this corporate building provides efficient office suites for all professional businesses.

[Virtual Tour](#)

[Drone Video](#)

CLASS A OFFICE SPACE

Space Available
2,019-16,827 RSF

Total Space Available
30,913 RSF



For more information, contact:

Damien Madsen

(407) 256.2844

DMadsen@harbertrealty.com

Josh Smith

(407) 377.4050

JSmith@harbertrealty.com

Property Owned &
Operated by:



SPACE AVAILABLE

Suite	RSF
100A	6,707*
100B	5,630*
180	2,019**
400	16,827***

* Suites can be combined for 12,946 RSF

** Available 3/1/2024

*** Available 10/1/2024



BUILDING FEATURES & AMENITIES

- ▶ 111,000 RSF Class A 4-Story Building
- ▶ On-Site Institutional Property Management
- ▶ 4/1000 Parking Ratio
- ▶ On-Site Building Cafe
- ▶ **New Building Feature: Advanced and Targeted Cleanings of Common Area Spaces**
- ▶ Large Centrally Located Courtyard for Collaborative Distancing Area



For more information, contact:

Damien Madsen

(407) 256.2844

DMadsen@harbertrealty.com

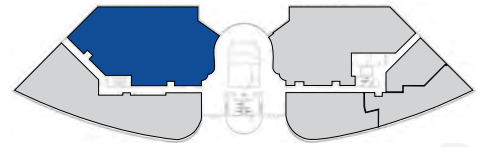
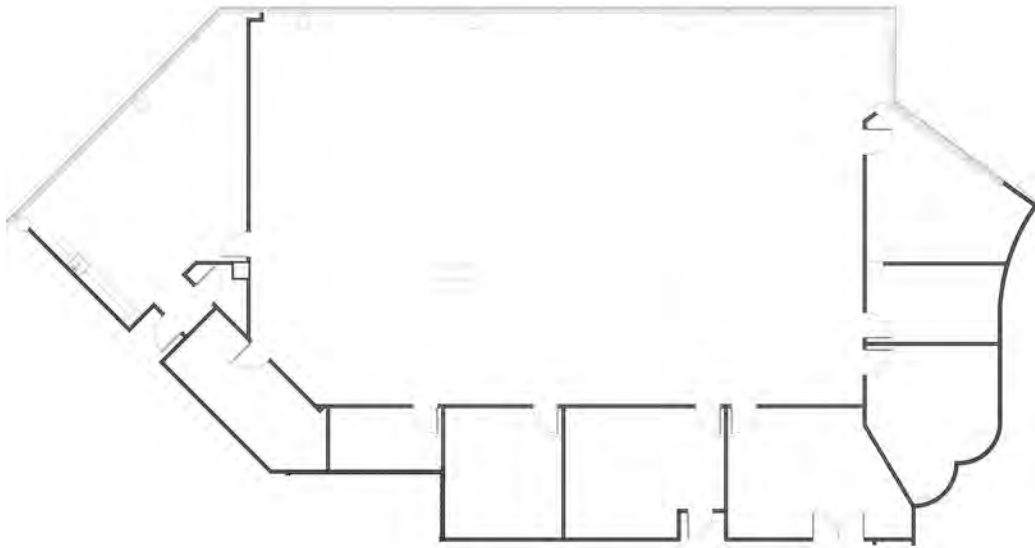
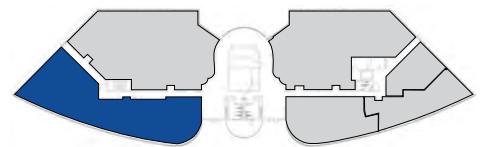
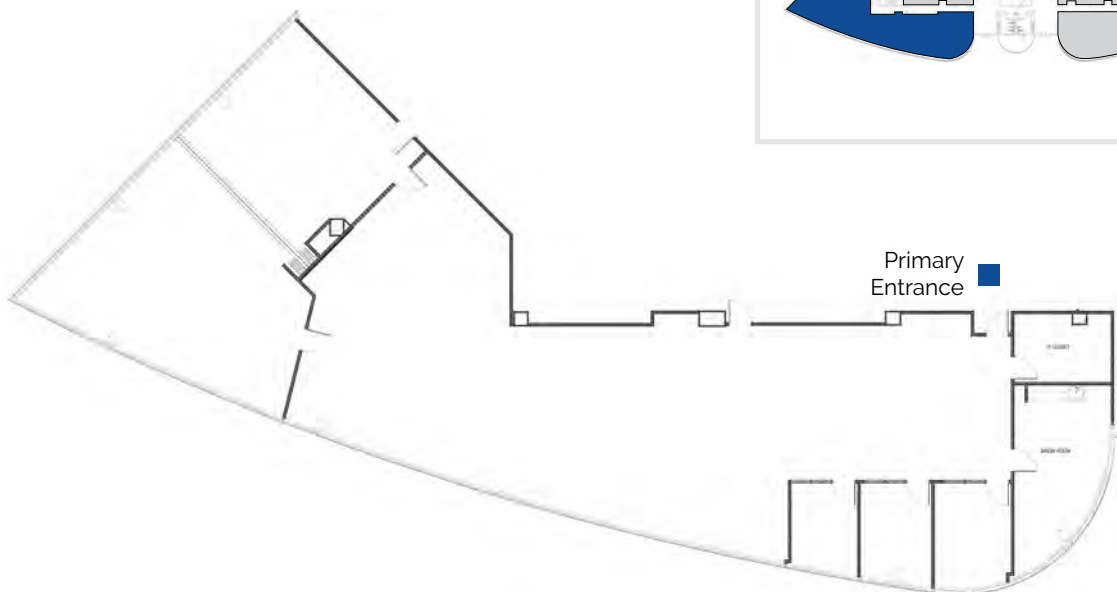
Josh Smith

(407) 377.4050

JSmith@harbertrealty.com

Property Owned &
Operated by:



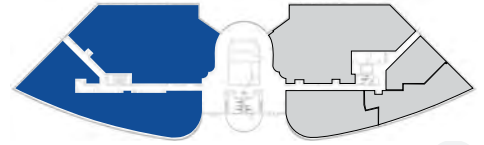
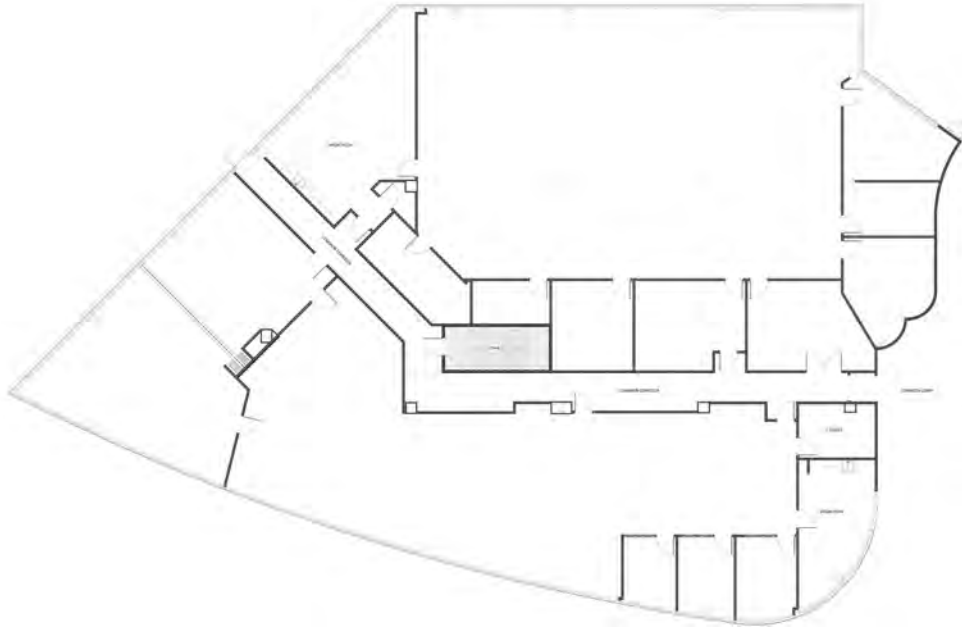
1st
Floor**Suite 100A: 6,707 RSF***NORTH
➤Primary
Entrance*** Suites can be combined for 12,946 RSF**1st
Floor**Suite 100B: 5,630 RSF***NORTH
➤Primary
Entrance

For more information, contact:

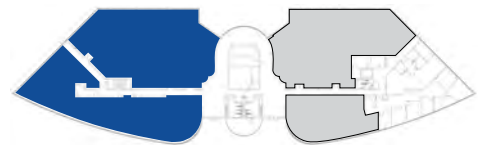
Damien Madsen**(407) 256.2844****DMadsen@harbertrealty.com****Josh Smith****(407) 377.4050****JSmith@harbertrealty.com**Property Owned &
Operated by:

1st
Floor

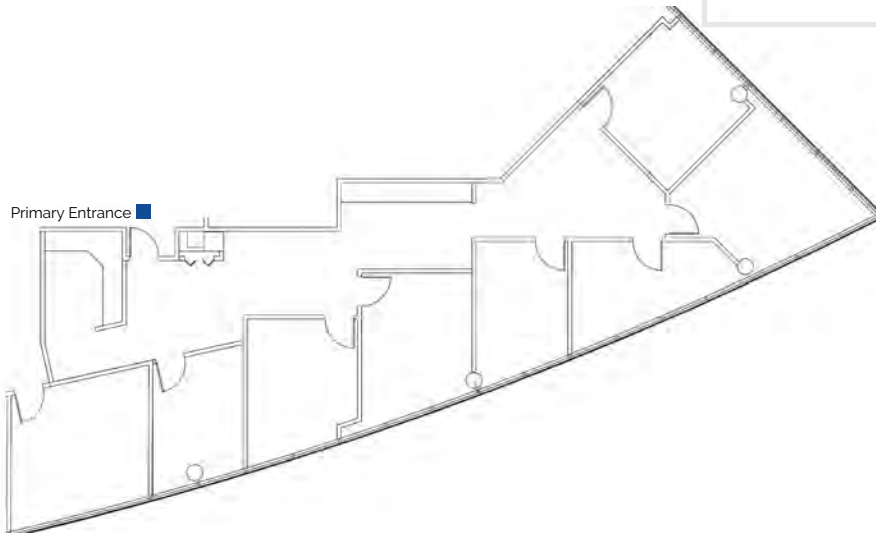
Suite 100: 12,946 RSF

NORTH
➤1st
Floor

Suite 180: 2,019 RSF**

NORTH
➤

**Available 3/1/2024



Primary Entrance ■

For more information, contact:

Damien Madsen

(407) 256.2844

DMadsen@harbertrealty.com

Josh Smith

(407) 377.4050

JSmith@harbertrealty.com

Property Owned &
Operated by:

4th
Floor

Suite 400: 16,827 RSF***



***Available 10/1/2024

Primary Entrance



For more information, contact:

Damien Madsen

(407) 256.2844

DMadsen@harbertrealty.com

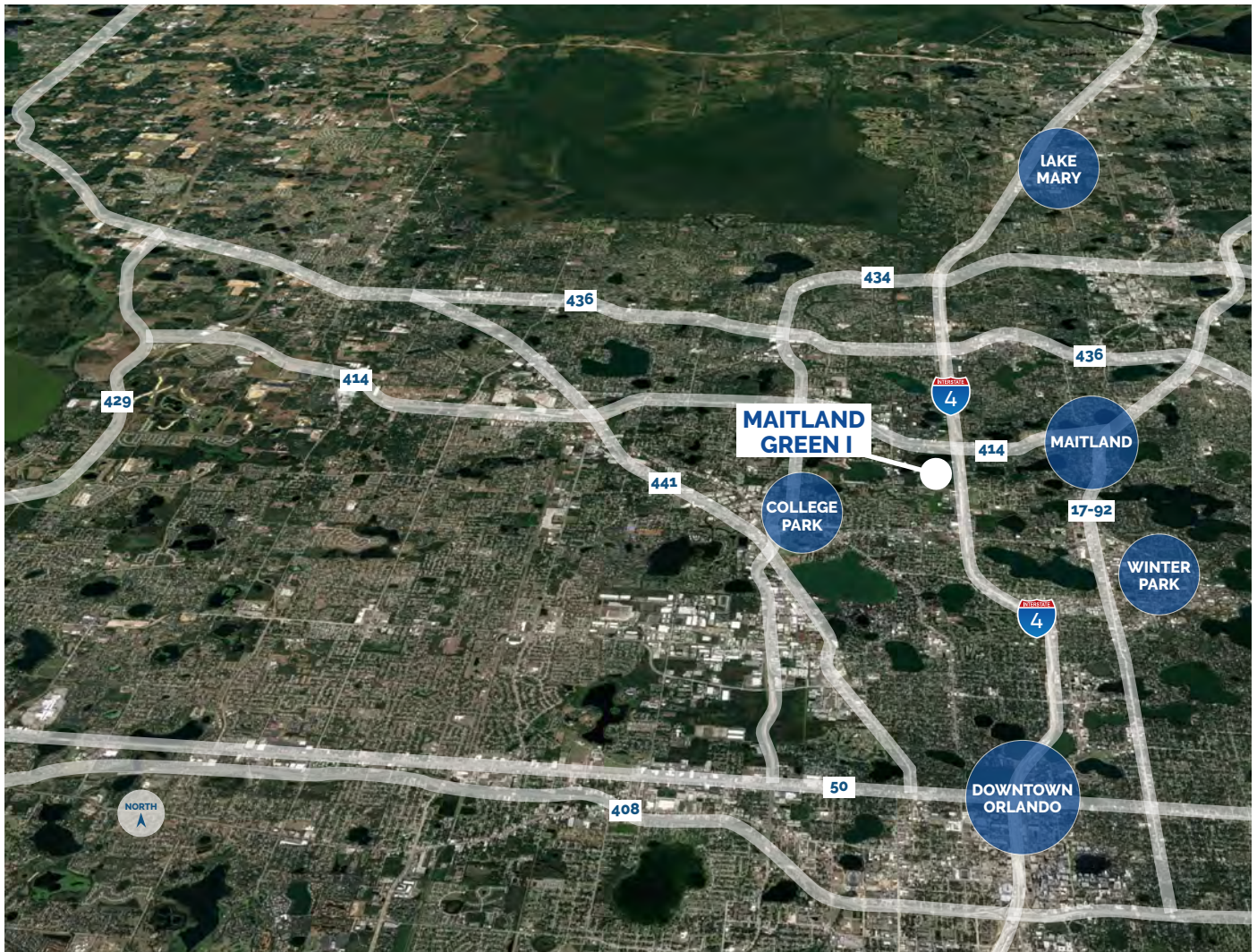
Josh Smith

(407) 377.4050

JSmith@harbertrealty.com

Property Owned &
Operated by:





LOCATION HIGHLIGHTS

- ▶ Well-positioned within Maitland Center Office Park, one of Orlando's largest office submarkets
- ▶ Conveniently less than a half mile from I-4 & providing easy access to Downtown Orlando
- ▶ Close to business hotels, restaurants, retail and the RDV Sportsplex
- ▶ Ideally located in Central Florida's top executive housing market & the following established neighborhoods
 - Maitland: 3-Miles
 - Winter Park: 5-Miles
 - College Park: 7-Miles
 - Downtown: 8-Miles
 - Lake Mary: 12-Miles

For more information, contact:

Damien Madsen

(407) 256.2844

DMadsen@harbertrealty.com

Josh Smith

(407) 377.4050

JSmith@harbertrealty.com

Property Owned &
Operated by:

