

# OFFICE SPACE FOR LEASE



## 2701 maitland center parkway

Maitland, FL 32751

2701 Maitland Center is a multi-story office building located in the Maitland Center Office Park. It sits across from the RDV Sportsplex and close to many business hotels and local restaurants.

**CLASS A  
OFFICE SPACE**

**Space Available  
8,130 RSF**

**5% BROKERAGE FEE**

**Rent Concessions Available \***

### NEW BUILDING & LOBBY RENOVATIONS



For more information, contact:

**Damien Madsen**  
(407) 256.2844  
DMadsen@harbertrealty.com

**Josh Smith**  
(407) 377.4050  
JSmith@harbertrealty.com

Property Owned &  
Operated by:



## SPACE AVAILABLE

Suite	RSF
200	8,130*

\* Demisable - Size TBD

## BUILDING FEATURES & AMENITIES

- ▶ **TOTAL Building & Lobby Renovations**
- ▶ 50,805 RSF Class A 3-Story Building
- ▶ Monument Signage Available
- ▶ Fiber: Century Link / Cable: Spectrum
- ▶ 4/1000 Parking Ratio



For more information, contact:

**Damien Madsen**  
(407) 256.2844  
DMadsen@harbertrealty.com

**Josh Smith**  
(407) 377.4050  
JSmith@harbertrealty.com

Property Owned &  
Operated by:



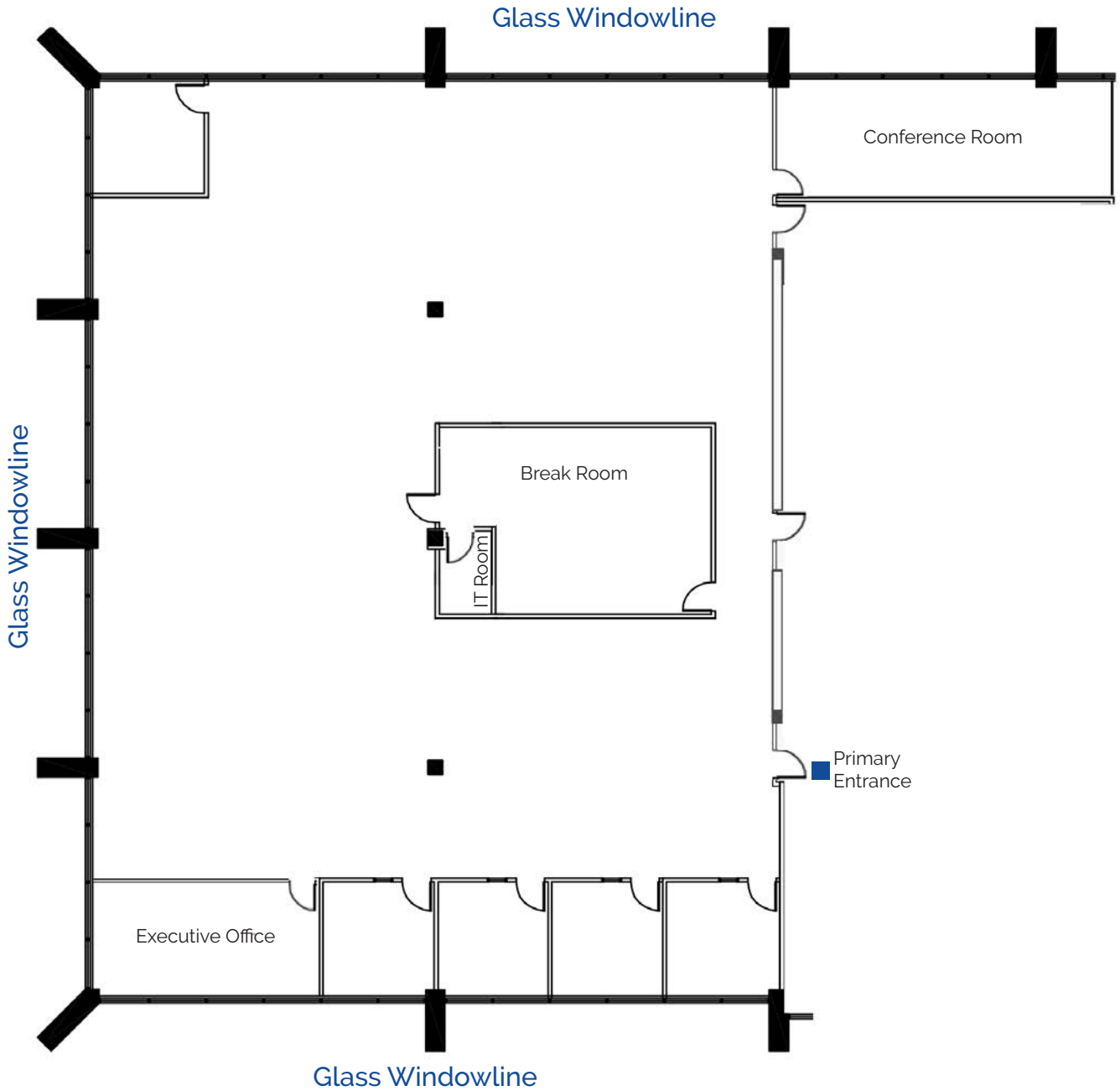


2nd  
Floor

Suite 200: 8,130 RSF\*



\* Demisable - Size TBD



For more information, contact:

**Damien Madsen**

(407) 256.2844

DMadsen@harbertrealty.com

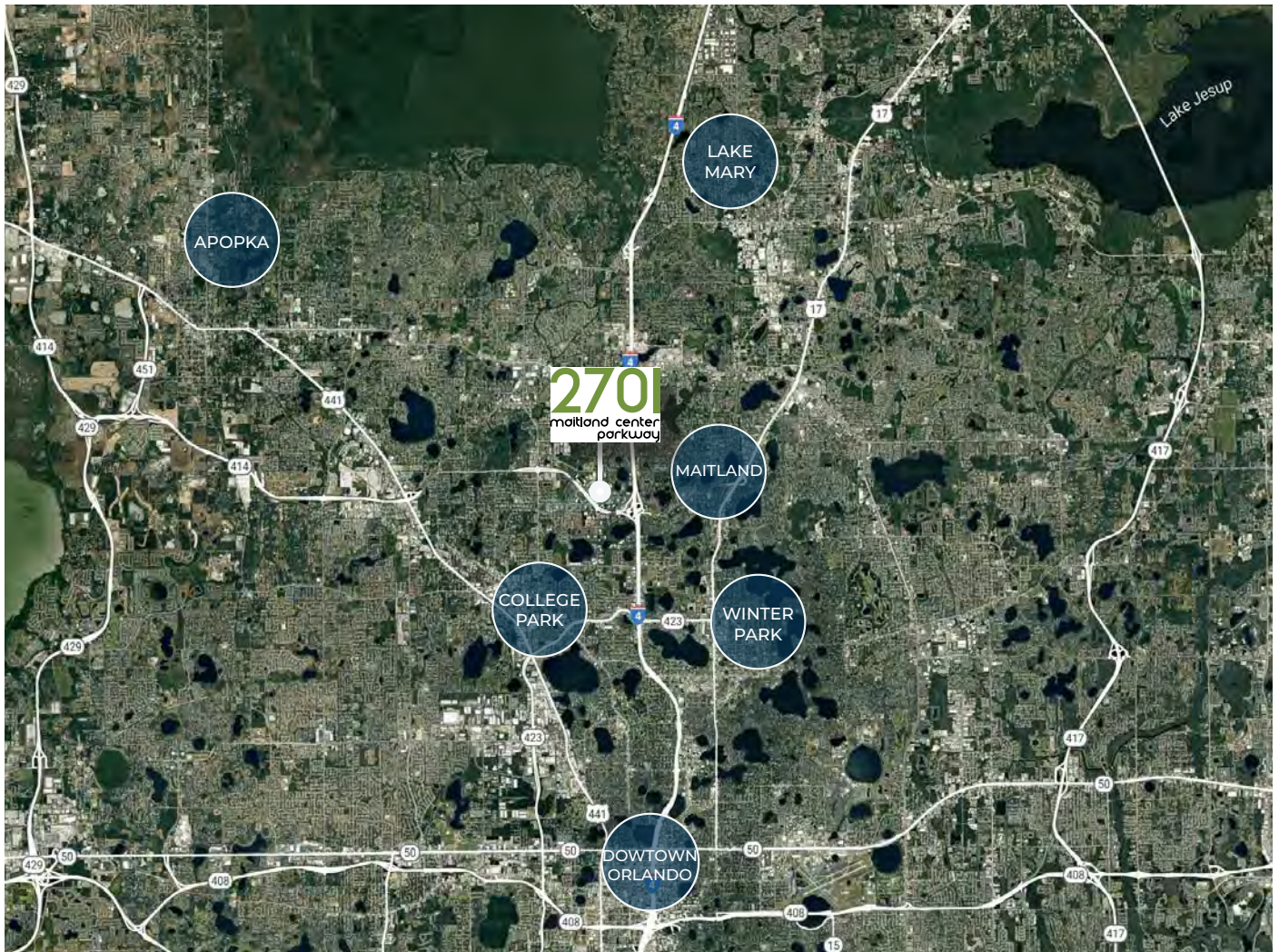
**Josh Smith**

(407) 377.4050

JSmith@harbertrealty.com

Property Owned &  
Operated by:





## LOCATION HIGHLIGHTS

- ▶ Well-positioned within Maitland Center Office Park, one of Orlando's largest office submarkets
- ▶ Conveniently less than a half mile from I-4 & providing easy access to Downtown Orlando
- ▶ Close to business hotels, restaurants, retail and the RDV Sportsplex
- ▶ Ideally located in Central Florida's top executive housing market & the following established neighborhoods
  - Maitland: 3-Miles
  - Winter Park: 5-Miles
  - College Park: 7-Miles
  - Downtown: 8-Miles
  - Lake Mary: 12-Miles

For more information, contact:

**Damien Madsen**  
(407) 256.2844  
DMadsen@harbertrealty.com

**Josh Smith**  
(407) 377.4050  
JSmith@harbertrealty.com

Property Owned &  
Operated by:

