

# OFFICE SPACE FOR LEASE



## MAITLAND GREEN I

601 S. Lake Destiny Road  
Maitland, FL 32751

Maitland Green I is a 4-story Class A office building with approximately 111,000 RSF and available space ranging from 2,019-16,827 RSF.

Located in the highly desirable Maitland Center Office Park, this corporate building provides efficient office suites for all professional businesses.

[Virtual Tour](#)

[Drone Video](#)

**CLASS A  
OFFICE SPACE**

**Space Available  
2,019-16,827 RSF**

**Total Space Available  
31,996 RSF**



For more information, contact:

**Damien Madsen**  
(407) 256.2844  
DMadsen@harbertrealty.com

**Josh Smith**  
(407) 377.4050  
JSmith@harbertrealty.com

Property Owned &  
Operated by:



## SPACE AVAILABLE

Suite	RSF
100A	7,149*
100B	6,001*
180	2,019
400	16,827**
400A	7,505**
400B	3,567**
400C	5,755**

\* Suites can be combined for 13,150 RSF

\*\* Available 10/1/2024



## BUILDING FEATURES & AMENITIES

- ▶ 111,000 RSF Class A 4-Story Building
- ▶ On-Site Institutional Property Management
- ▶ 4/1000 Parking Ratio
- ▶ On-Site Building Cafe
- ▶ **New Building Feature: Advanced and Targeted Cleanings of Common Area Spaces**
- ▶ Large Centrally Located Courtyard for Collaborative Distancing Area



For more information, contact:

**Damien Madsen**  
 (407) 256.2844  
 DMadsen@harbertrealty.com

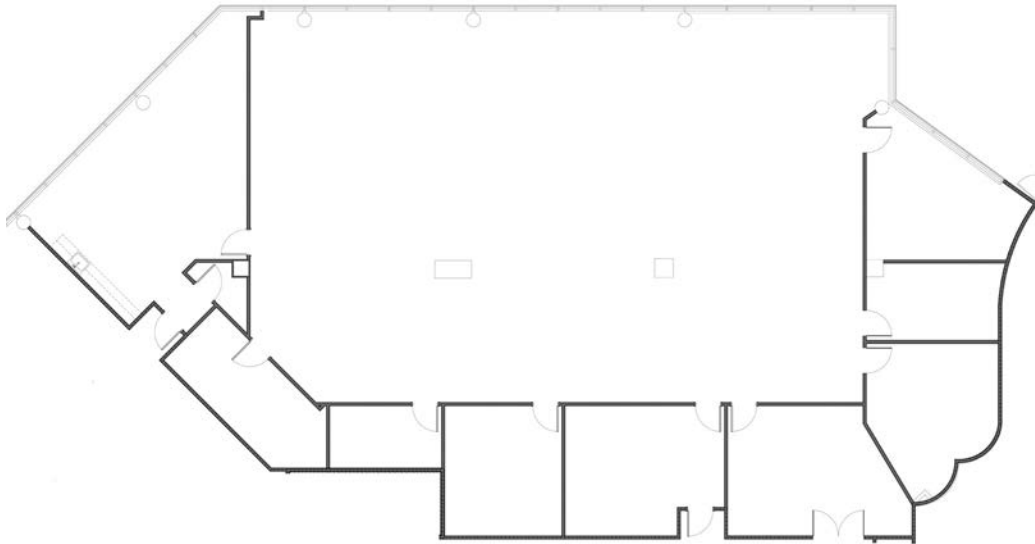
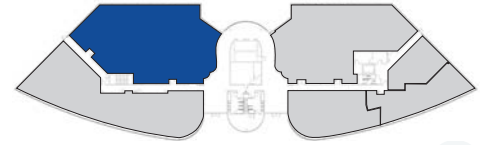
**Josh Smith**  
 (407) 377.4050  
 JSmith@harbertrealty.com

Property Owned &  
 Operated by:



1st Floor

Suite 100A: 7,149 RSF\*

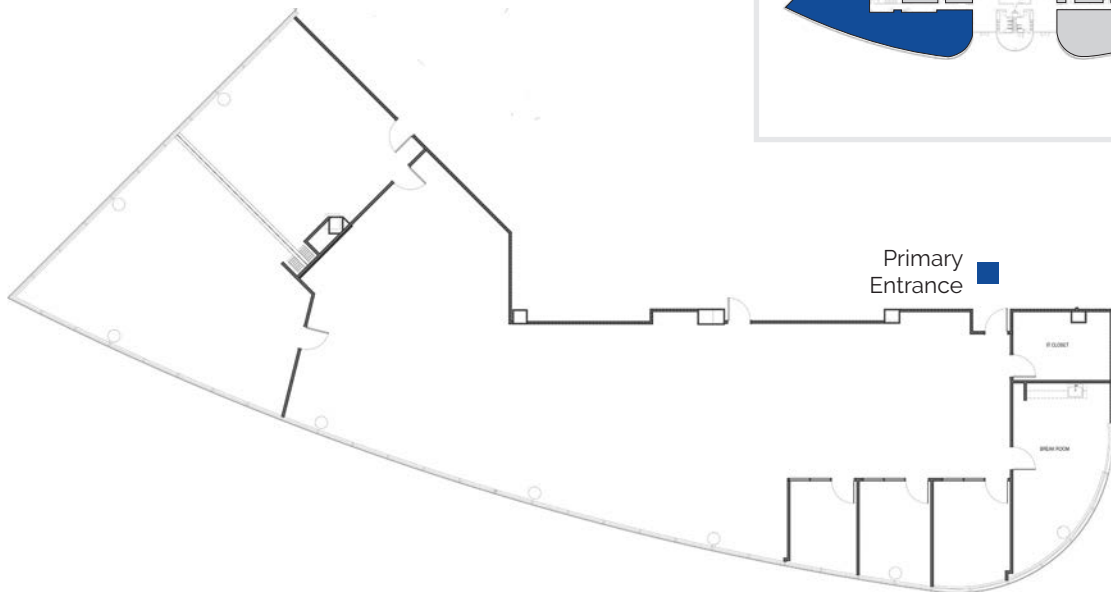
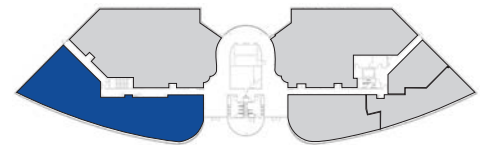


Primary Entrance

\* Suites can be combined for 13,150 RSF

1st Floor

Suite 100B: 6,001 RSF\*



Primary Entrance

For more information, contact:

**Damien Madsen**

(407) 256.2844

DMadsen@harbertrealty.com

**Josh Smith**

(407) 377.4050

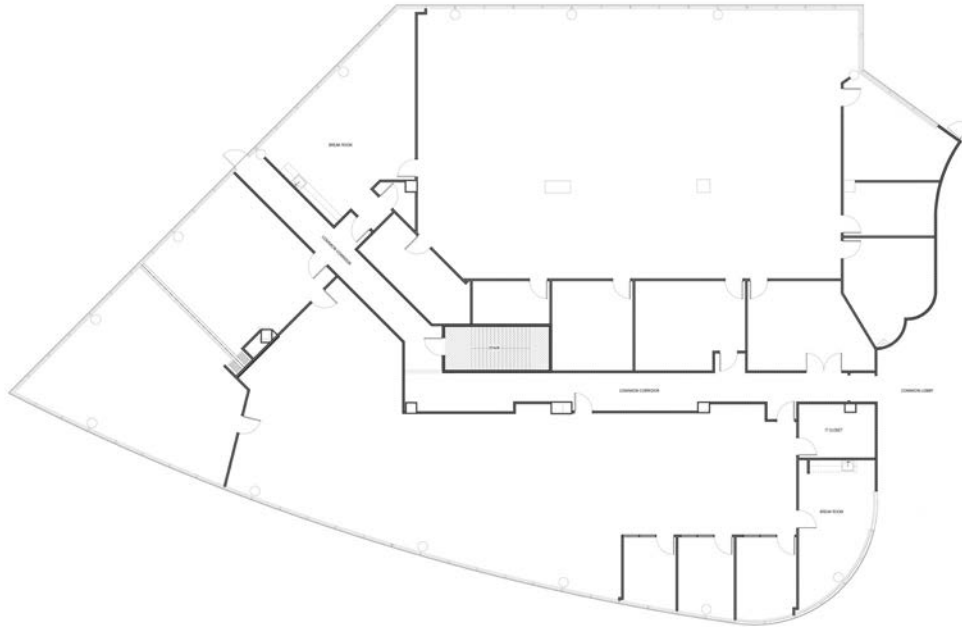
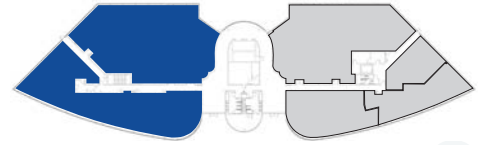
JSmith@harbertrealty.com

Property Owned & Operated by:



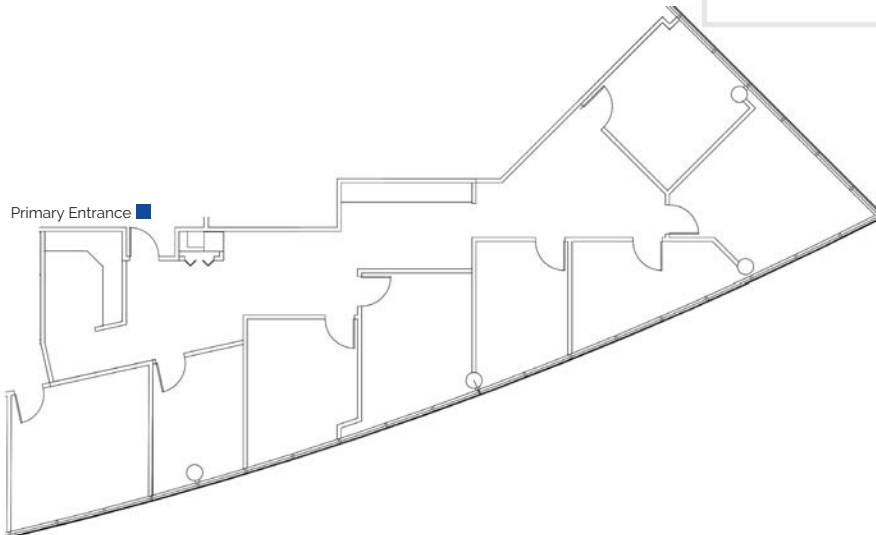
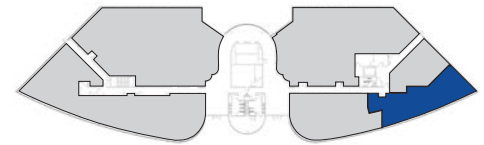
1st Floor

Suite 100: 13,150 RSF



1st Floor

Suite 180: 2,019 RSF



For more information, contact:

**Damien Madsen**

(407) 256.2844

DMadsen@harbertrealty.com

**Josh Smith**

(407) 377.4050

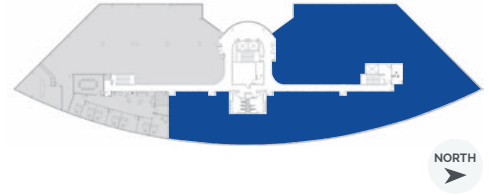
JSmith@harbertrealty.com

Property Owned &  
Operated by:



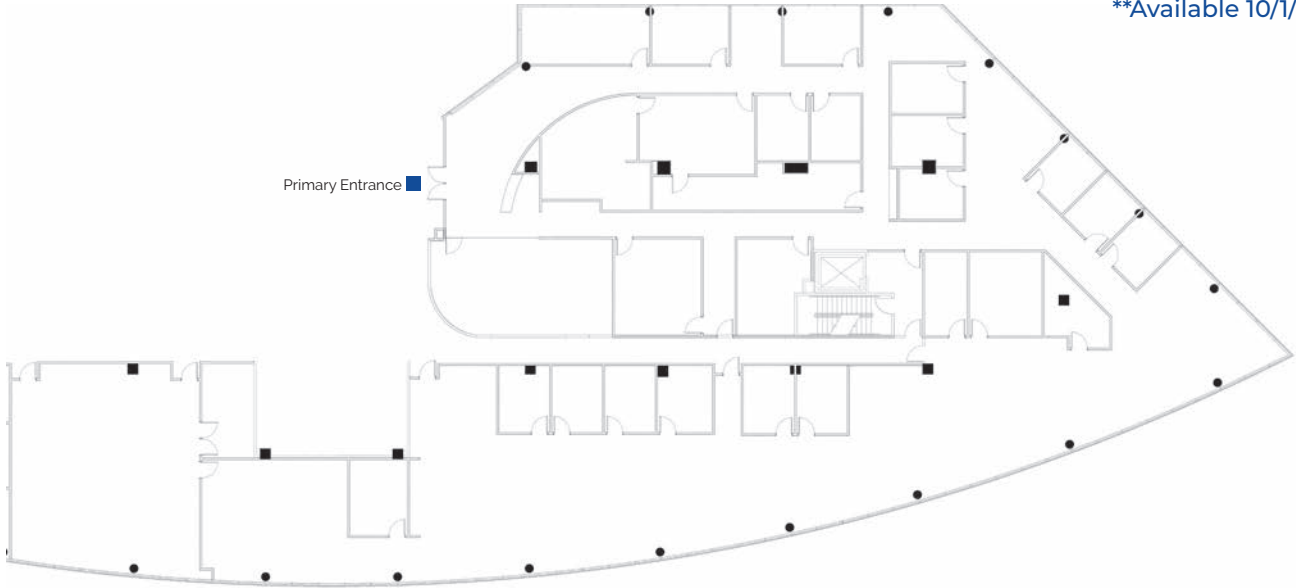
4th Floor

Suite 400: 16,827 RSF\*\*



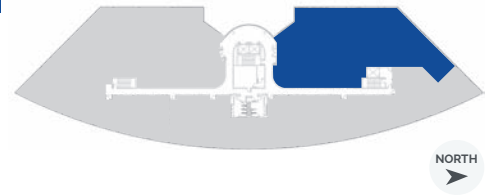
\*\*Available 10/1/2024

Primary Entrance



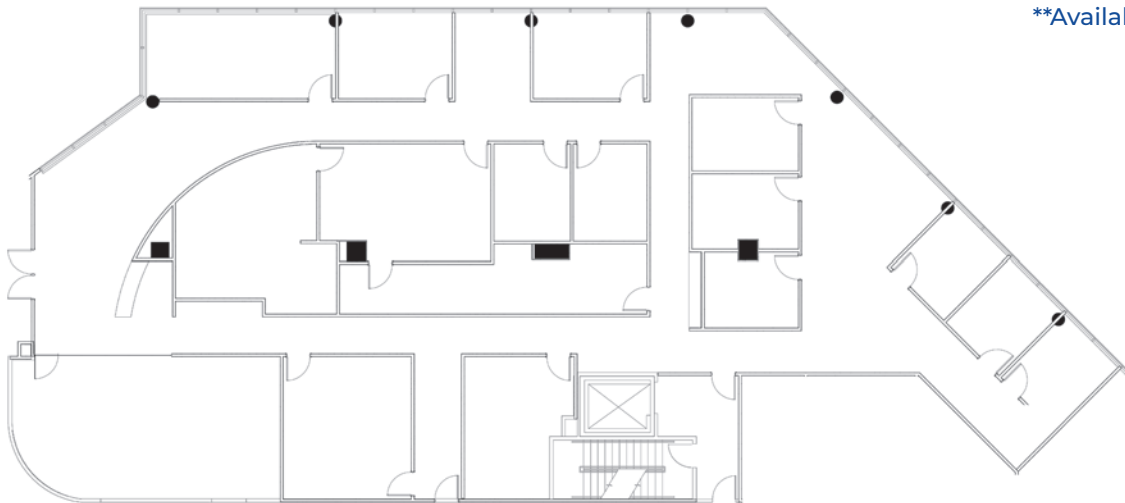
4th Floor

Suite 400A: 7,505 RSF\*\*



\*\*Available 10/1/2024

Primary Entrance



For more information, contact:

**Damien Madsen**

(407) 256.2844

DMadsen@harbertrealty.com

**Josh Smith**

(407) 377.4050

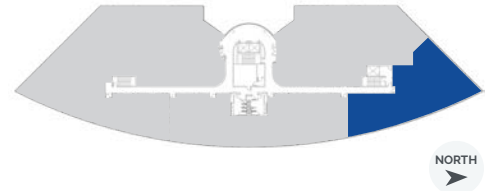
JSmith@harbertrealty.com

Property Owned &  
Operated by:

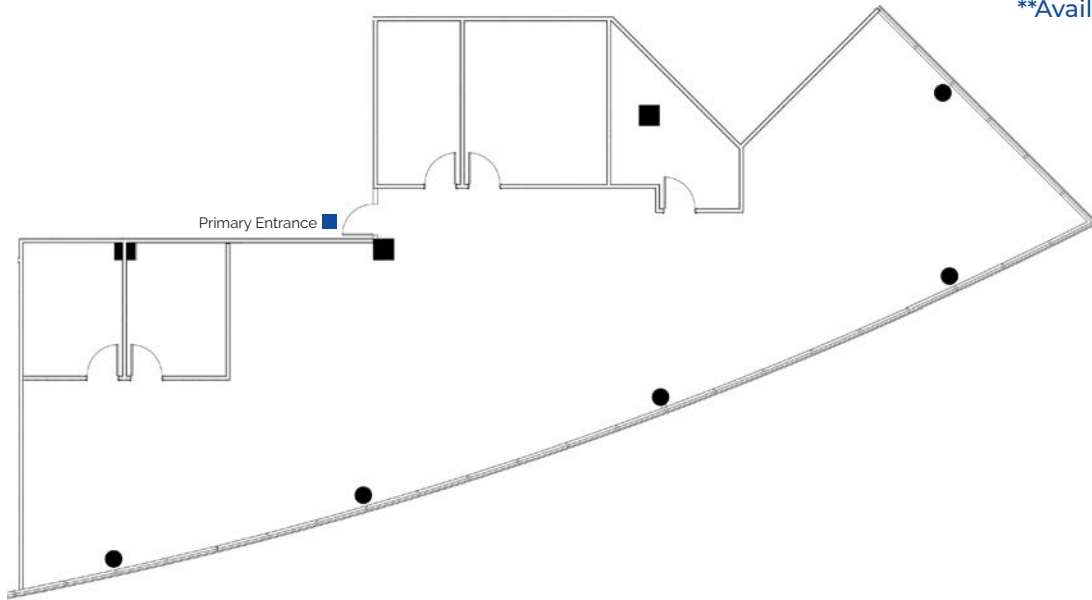


4th Floor

Suite 400B: 3,567 RSF\*\*

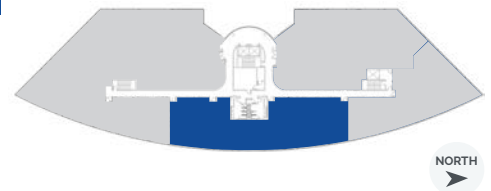


\*\*Available 10/1/2024

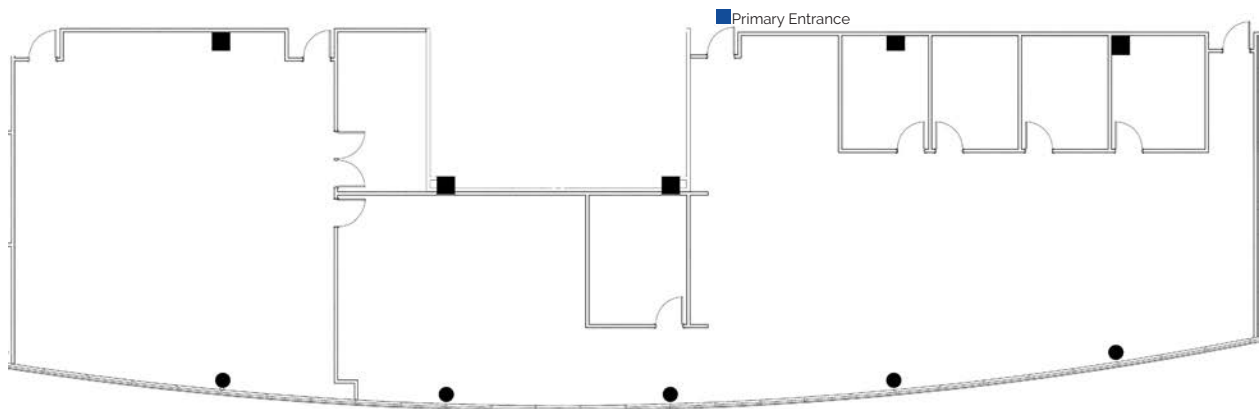


4th Floor

Suite 400C: 5,755 RSF\*\*



\*\*Available 10/1/2024



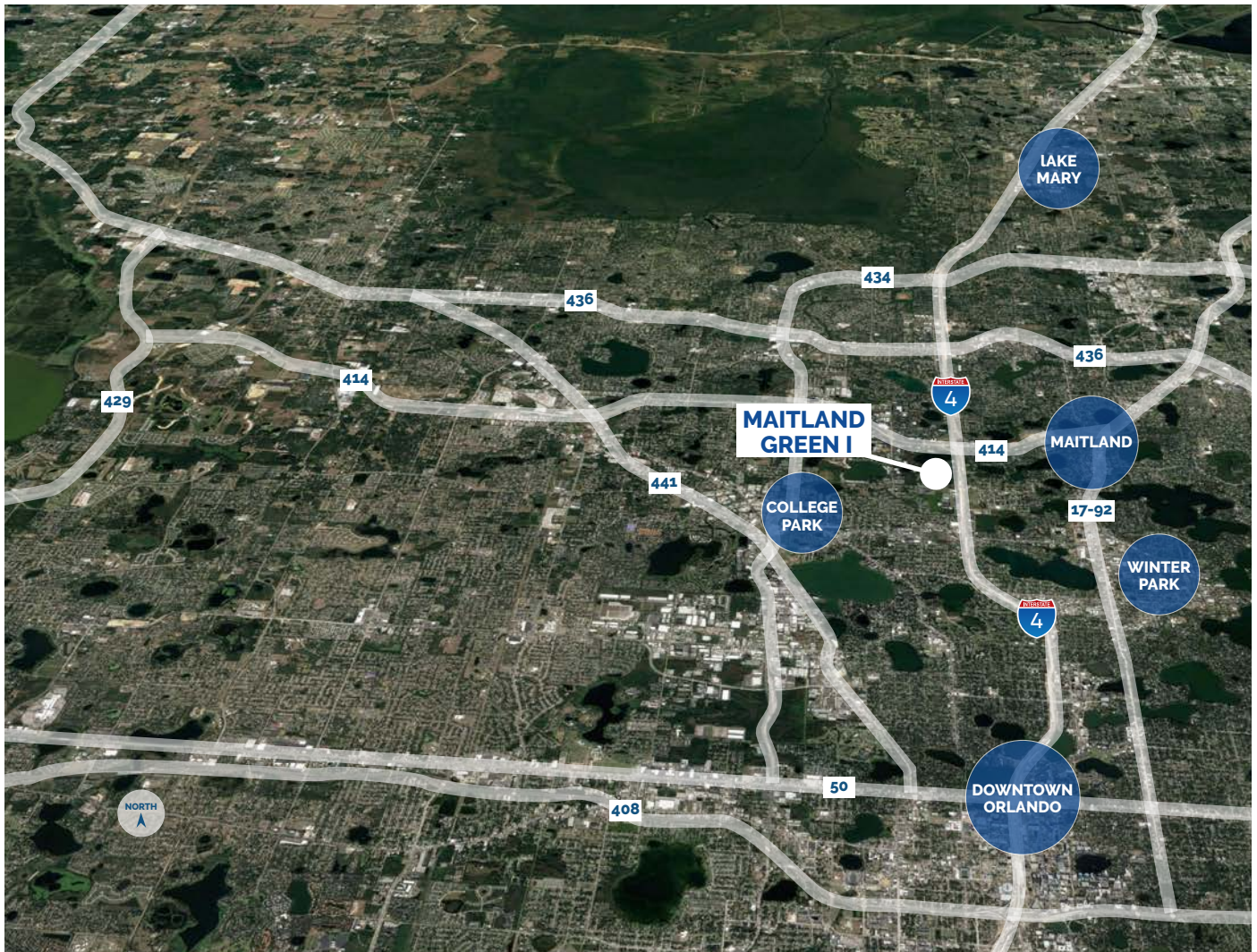
For more information, contact:

**Damien Madsen**  
(407) 256.2844  
DMadsen@harbertrealty.com

**Josh Smith**  
(407) 377.4050  
JSmith@harbertrealty.com

Property Owned &  
Operated by:





## LOCATION HIGHLIGHTS

- ▶ Well-positioned within Maitland Center Office Park, one of Orlando's largest office submarkets
- ▶ Conveniently less than a half mile from I-4 & providing easy access to Downtown Orlando
- ▶ Close to business hotels, restaurants, retail and the RDV Sportsplex
- ▶ Ideally located in Central Florida's top executive housing market & the following established neighborhoods
  - Maitland: 3-Miles
  - Winter Park: 5-Miles
  - College Park: 7-Miles
  - Downtown: 8-Miles
  - Lake Mary: 12-Miles

For more information, contact:

**Damien Madsen**  
 (407) 256.2844  
 DMadsen@harbertrealty.com

**Josh Smith**  
 (407) 377.4050  
 JSmith@harbertrealty.com

Property Owned &  
 Operated by:

