

# OFFICE SPACE FOR LEASE



**MAITLAND GREEN I**  
601 S. Lake Destiny Drive  
Maitland, FL 32751

Maitland Green I is a 4-story Class A office building with approximately 111,000 RSF and available space ranging from 2,625-28,741 RSF.

Located in the highly desirable Maitland Center Office Park, this corporate building provides efficient office suites.

**CLASS A  
OFFICE SPACE**

Space Available  
**2,625-28,741 RSF**

Total Space Available  
**44,516 RSF**

[Virtual Tour](#)

[Drone Video](#)



For more information, contact:  
[Damien Madsen](#)  
(407) 256.2844  
DMadsen@harbertrealty.com

[Josh Smith](#)  
(407) 377.4050  
JSmith@harbertrealty.com

Property Owned &  
Operated by:



## SPACE AVAILABLE

Suite	RSF
100A	7,149*
100B	6,001*
250	2,625
400	16,827
400A	7,505
400B	3,567
400C	5,755
4th Floor	28,741

\* Suites can be combined for 13,150 RSF



## BUILDING FEATURES & AMENITIES

- 111,000 RSF Class A 4-Story Building
- On-Site Institutional Property Management
- 4/1000 Parking Ratio
- On-Site Building Cafe
- **New Building Feature: Advanced and Targeted Cleanings of Common Area Spaces**
- Large Centrally Located Courtyard for Collaborative Distancing Area



For more information, contact:  
**Damien Madsen**  
 (407) 256.2844  
 DMadsen@harbertrealty.com

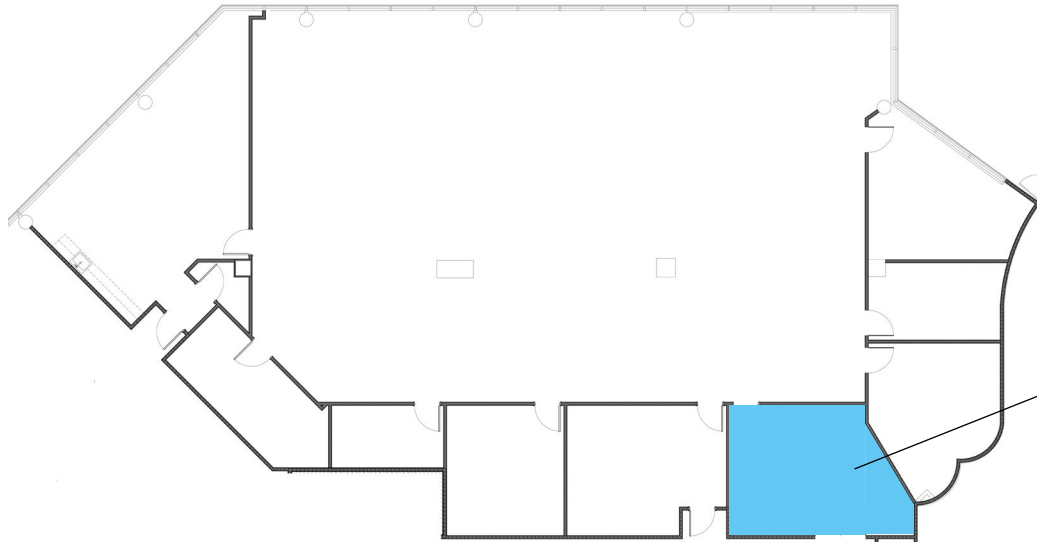
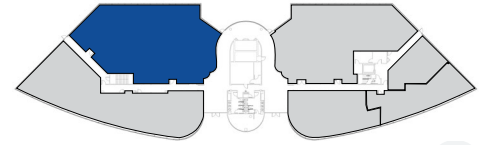
**Josh Smith**  
 (407) 377.4050  
 JSmith@harbertrealty.com

Property Owned &  
 Operated by:



1st Floor

Suite 100A: 7,149 RSF\*



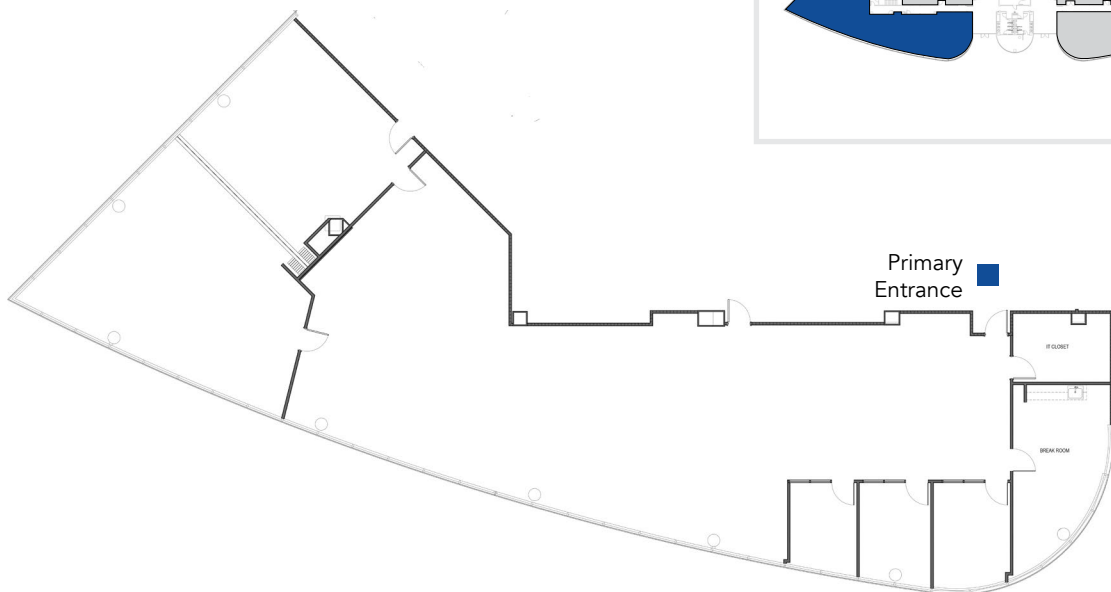
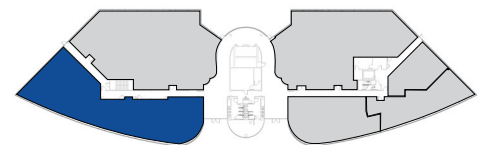
Grab-and-Go Station

Primary Entrance

\* Suites can be combined for 13,150 RSF

1st Floor

Suite 100B: 6,001 RSF\*



Primary Entrance

For more information, contact:  
**Damien Madsen**  
(407) 256.2844  
DMadsen@harbertrealty.com

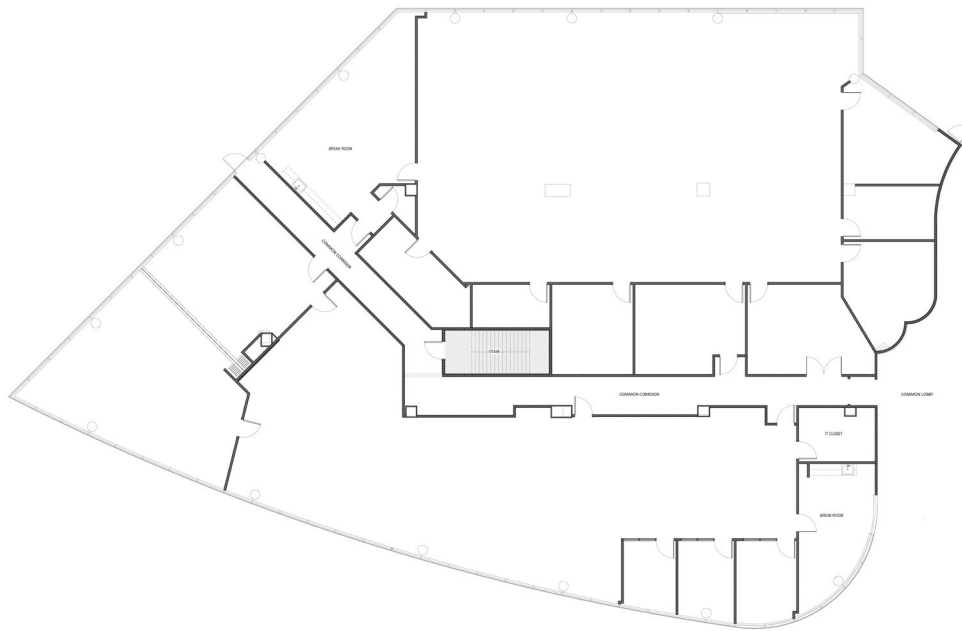
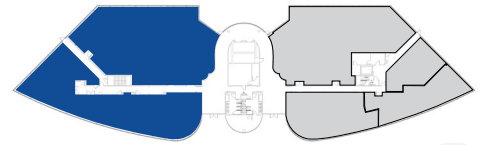
**Josh Smith**  
(407) 377.4050  
JSmith@harbertrealty.com

Property Owned &  
Operated by:



1st  
Floor

Suite 100: 13,150 RSF



For more information, contact:  
[Damien Madsen](#)  
(407) 256.2844  
DMadsen@harbertrealty.com

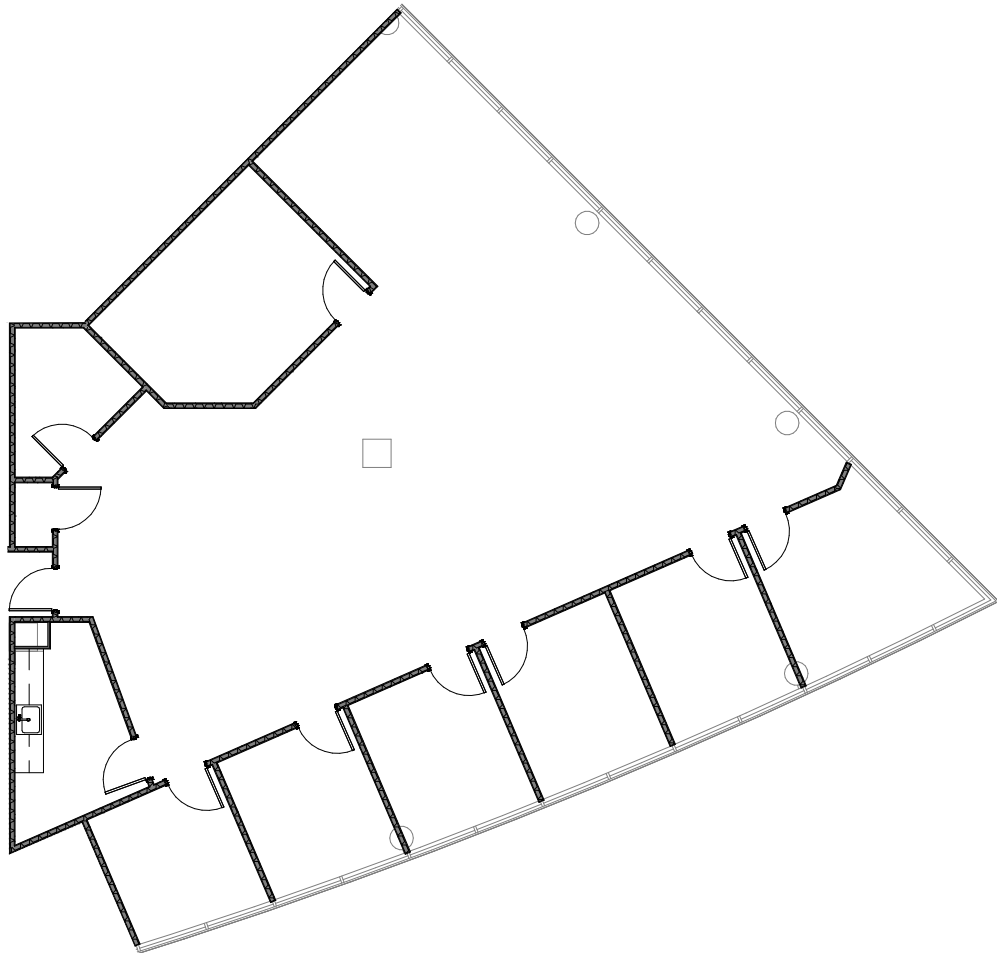
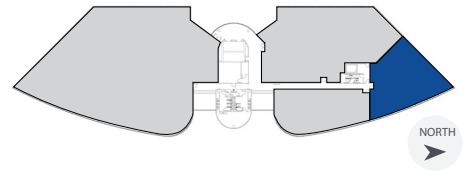
[Josh Smith](#)  
(407) 377.4050  
JSmith@harbertrealty.com

Property Owned &  
Operated by:



2nd  
Floor

Suite 250: 2,625 RSF



For more information, contact:  
[Damien Madsen](#)  
(407) 256.2844  
DMadsen@harbertrealty.com

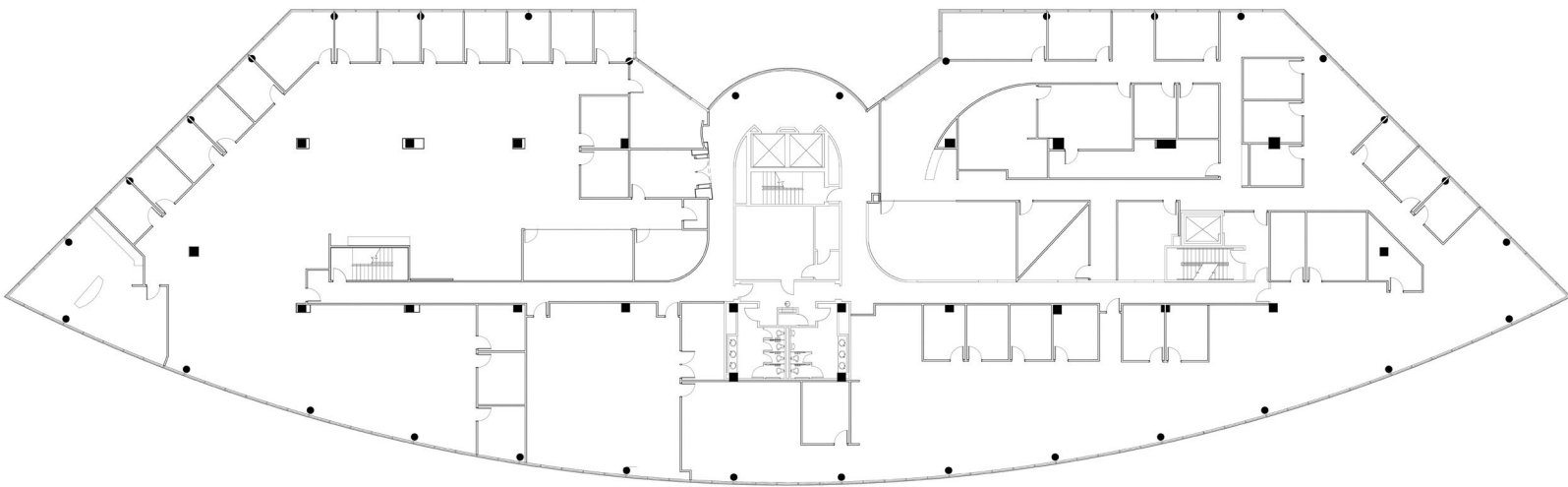
[Josh Smith](#)  
(407) 377.4050  
JSmith@harbertrealty.com

Property Owned &  
Operated by:



**Maitland Green I**

Fourth Floor: 28,741 RSF



For more information, contact:  
[Damien Madsen](#)  
(407) 256.2844  
DMadsen@harbertrealty.com

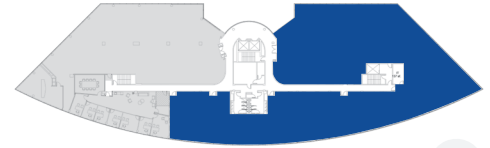
[Josh Smith](#)  
(407) 377.4050  
JSmith@harbertrealty.com

Property Owned &  
Operated by:

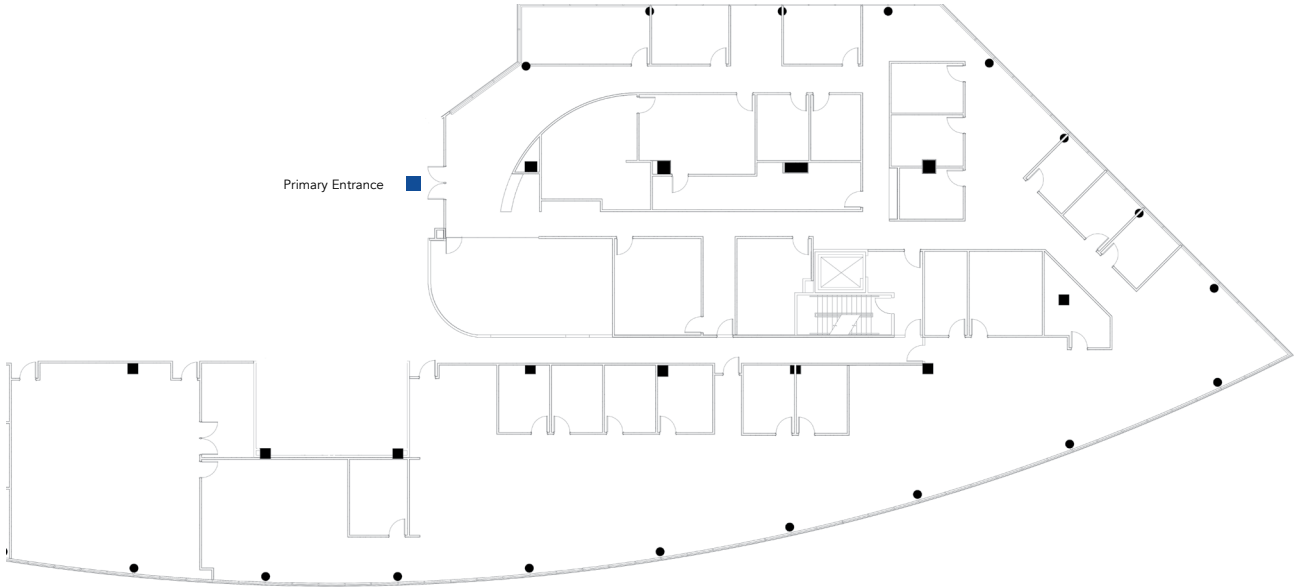


4th  
Floor

Suite 400: 16,827 RSF



Primary Entrance

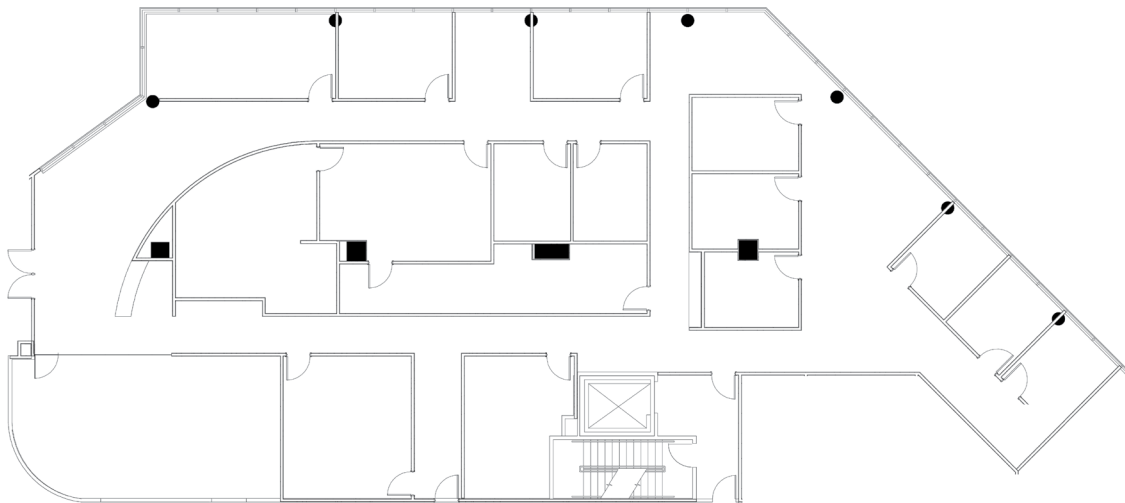


4th  
Floor

Suite 400A: 7,505 RSF



Primary Entrance



For more information, contact:  
**Damien Madsen**  
(407) 256.2844  
DMadsen@harbertrealty.com

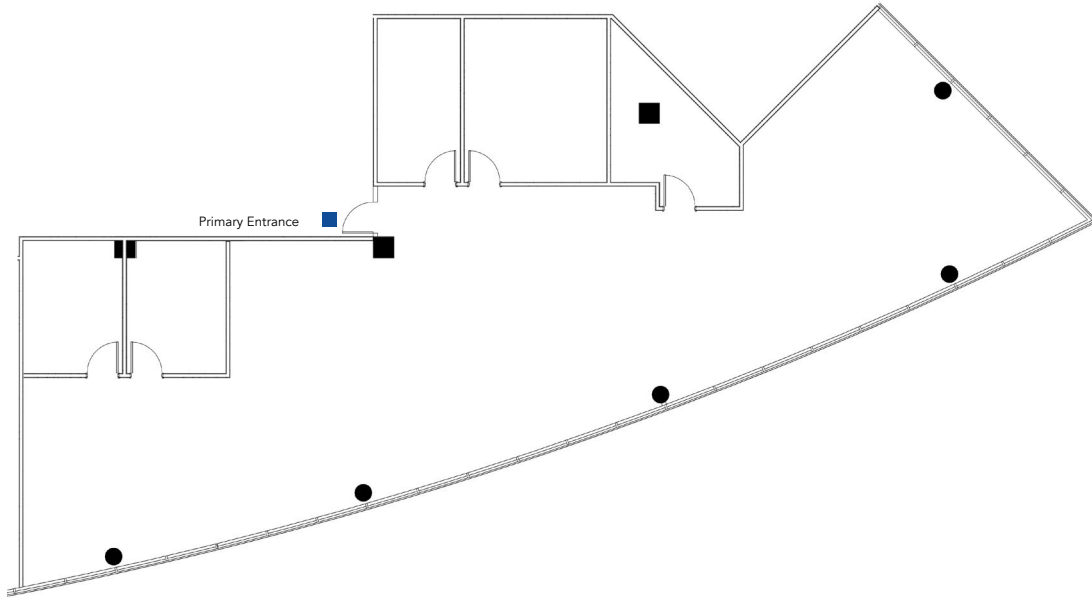
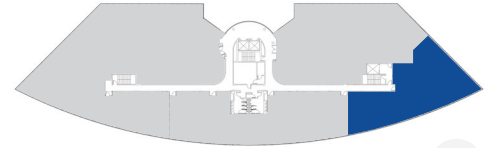
**Josh Smith**  
(407) 377.4050  
JSmith@harbertrealty.com

Property Owned &  
Operated by:



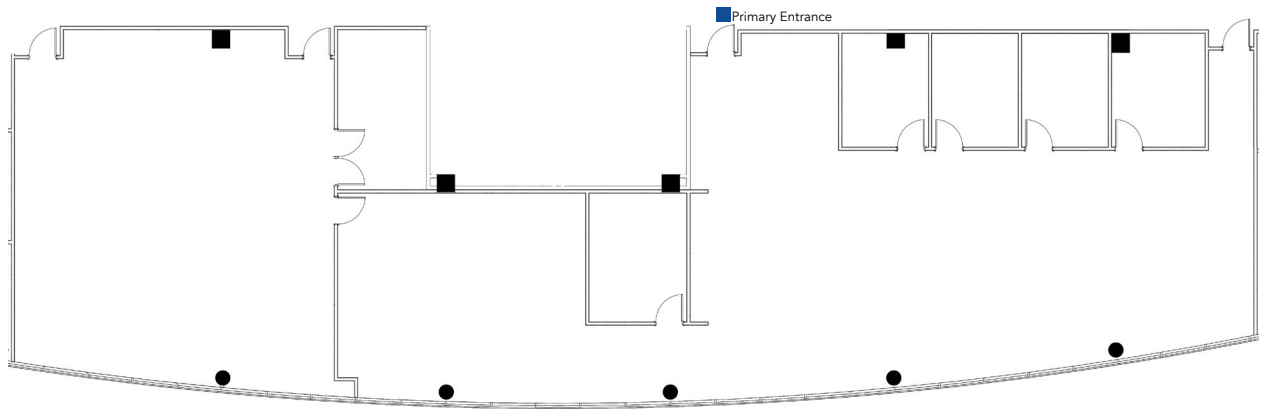
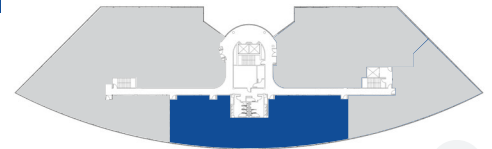
4th  
Floor

Suite 400B: 3,567 RSF



4th  
Floor

Suite 400C: 5,755 RSF



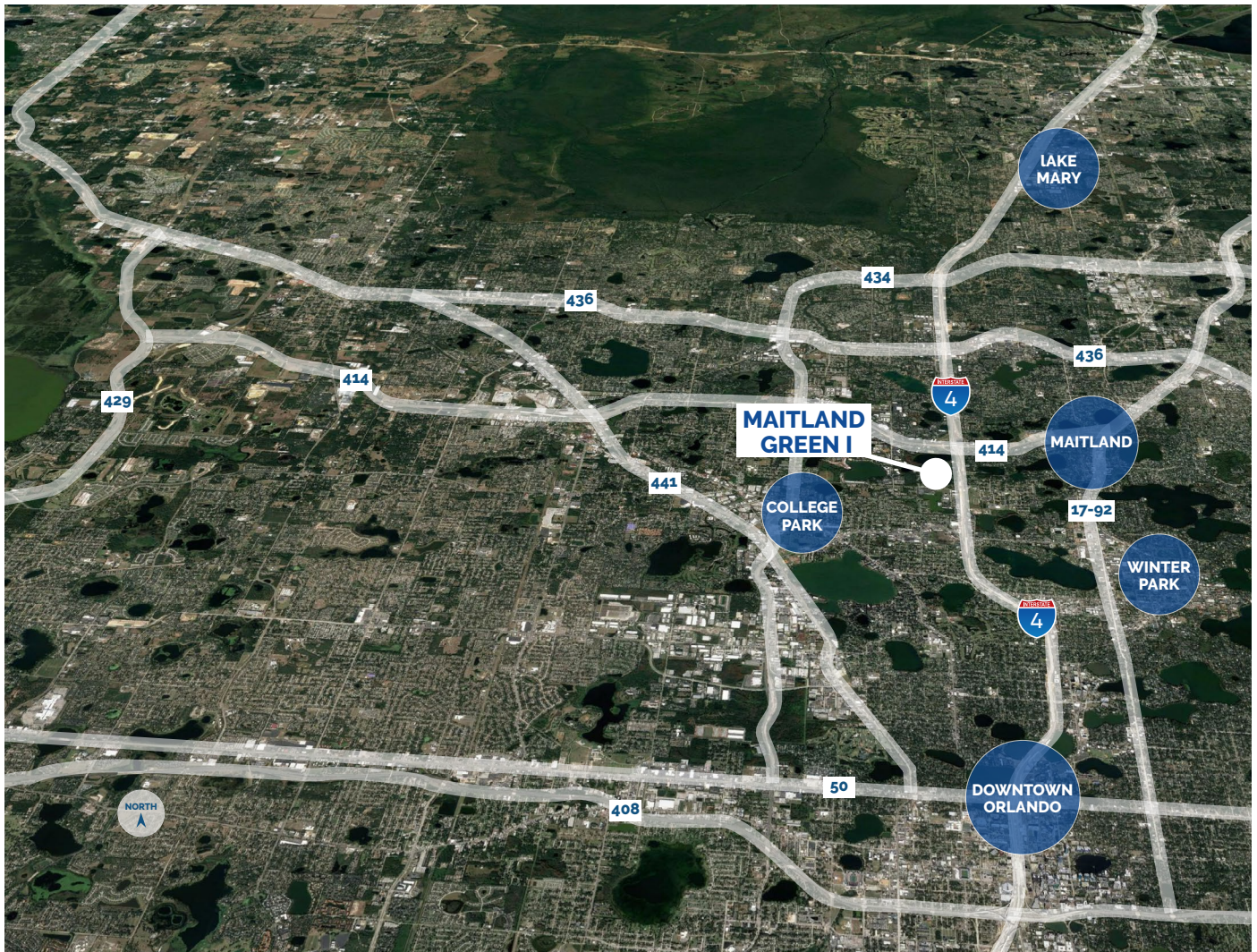
For more information, contact:  
**Damien Madsen**  
(407) 256.2844  
DMadsen@harbertrealty.com

**Josh Smith**  
(407) 377.4050  
JSmith@harbertrealty.com

Property Owned &  
Operated by:







## LOCATION HIGHLIGHTS

- Well-positioned within Maitland Center Office Park, one of Orlando's largest office submarkets
- Conveniently less than a half mile from I-4 & providing easy access to Downtown Orlando
- Close to business hotels, restaurants, retail and the RDV Sportsplex
- Ideally located in Central Florida's top executive housing market & the following established neighborhoods
  - Maitland: 3-Miles
  - Winter Park: 5-Miles
  - College Park: 7-Miles
  - Downtown: 8-Miles
  - Lake Mary: 12-Miles

For more information, contact:  
**Damien Madsen**  
 (407) 256.2844  
 DMadsen@harbertrealty.com

**Josh Smith**  
 (407) 377.4050  
 JSmith@harbertrealty.com

Property Owned &  
 Operated by:

